

*Redland Genealogical Society*

*A branch of the Genealogical Society of Queensland Inc.*

# *REDLAND RESEARCHER*



# Redland Genealogical Society

A branch of the Genealogical Society of Queensland Inc.

PO Box 605

Cleveland Qld 4163

Email: [redlandgs@gmail.com](mailto:redlandgs@gmail.com)

Website: [www.rgs.net.au](http://www.rgs.net.au)

## 2016/2017 Management Committee

Patron: Les McFadzen

President:	Helen Veivers
Vice President:	Kevin Hughes
Secretary:	Dianne Smith
Treasurer:	Irene Salvatierra
Assistant Treasurer:	Yvonne Weston
Membership Officer:	Annette Hall
Archivist:	Pat Misson
Displays Co-ordinator:	Elaine Speck
Newsletter Editor:	Greg Glidden
Librarian:	Ray Steele
Committee Member 1:	Jeanne Dixon
Committee Member 2:	Lyn Smyth

### Life Members 2010

Denise Brady (Foundation Member), Marel Donaldson (Foundation Member)  
Kaye Barber, Pamela Gilbert, Elaine Speck, Glenda Webb

**Life Member 2011** Les Callaghan, **Life Member 2013** Les McFadzen

**Life Member 2016** Jeanne Dixon

**Membership:** Membership is **either** through the Genealogical Society of Queensland Inc. and nominating to be a member of the Redland Branch **or** by directly joining the Redland Genealogical Society (Inc.) as an Associate Member; refer page 3 for Membership Fees. **Associate Membership of RGS does not entitle members to free use of GSQ facilities.**

**Meetings:** The Management Committee of the Redland Genealogical Society meets on the first Wednesday of each month, February to December, commencing at 2.00pm.

**General Meetings** of the Society are held on **the second Wednesday of each month**, February to December, from 12:15pm to 2:30pm, at the Donald Simpson Centre, Bloomfield Street, Cleveland. **An entry fee of \$2 applies at each meeting.** The Annual General Meeting is held in July, followed by the General Meeting. Meetings are not held in January.

**The Society's Collection** such as books, microfiche, CD-ROMs etc, which contain resources for world-wide research, are held in the Genealogy Room in the Cleveland Library, corner Middle and Bloomfield Streets. Volunteer Genealogical Research Assistants (**GRAs**) are there to assist both members and the general public on-

Tuesday and Thursday: 9.30am - 12.30pm      Saturday: 12.30pm - 3.30pm

**Financial members of the Society have access to this Collection any time that the Cleveland Library is open.**

**GRAs:** Ray Steele (Librarian), Bob Aldred, Kaye Barber, Mike Boyd, Beverly Bourke, Margaret Clark, Pauline Davy, Jeanne Dixon, Annette Hall, Brenda Jones, Ross Lambert, Bev McFadyen, Les McFadzen, Jan O'Brien, Irene Salvatierra, Dianne Smith, Helen Veivers, Audrey Warner, Alice Wilke, Charlotte Wruck.

**A reminder to GRAs:** If unable to attend on your rostered day, please arrange to swap duty with another GRA.

**Local History Collection:** The Redland City Council's local history and heritage collections are housed in the Cleveland Library. Leonie Swift is Redland City Council's *Local History and Heritage Librarian*.

## A Note from the Editor

A warm welcome to another year! Is everyone ready to resume their researching, particularly for those “elusive” ancestors hiding behind that “brick wall”? Through 2016, RGS made its presence known at information booths at Stocklands and the Donald Simpson Centre, Cleveland, the Victoria Point State School Centennial and the Birkdale South State School festival. Members attended workshops presented by the State Library, at the Cleveland Library, and enjoyed a very informative morning at the historical Victoria Barracks, Petrie Terrace; an extremely significant part of Queensland's' heritage, and one which must be preserved!

Greg Glidden

*Some of our Members enjoying the 2016 Christmas Afternoon Tea*



## Contents

2016/2017 Management Committee; Membership & Meeting Details; RGS Library & GRAs	2
A Note from the Editor; Contents; Membership Fees	3
Library News	4
“New Technology and Clairvoyance Connects Family”	5
Reflections on the History of Our Society	6
Magazine Interest Group; Guest Speaker; Advertising in the “Redland Researcher”	7
“In loving memory of Freda Margaret Maris - nee Buchanan” submitted by Cath Maris	8
“It Pays to keep Looking” by Audrey Warner; Members’ Interests	11
Members’ Interests (contd); Family & Local History Conference “Footsteps in Time”	12
Making the most of Trove – “Using the Tilde ~”	13
Making the most of Trove – “Listing Your Way to Success” (organising your Trove research)	14
Snippets; Wandering through the Web; National Archives Information; Qld State Archives Information	15
Where to get Your Certificates; QFHS Information; GSQ Information	16
<i>The opinions expressed in this Redland Researcher are not necessarily those of the Researcher Committee, nor of the Redland Genealogical Society. The responsibility rests with the authors of submitted articles; we do not intentionally print inaccurate information. The editor reserves the right to edit, abridge or reject material.</i>	

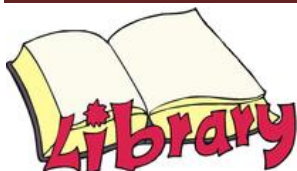
## Copyright

Articles published in the Redland Researcher are copyright to the Society and the authors. While articles may be copied for personal use, they may not be reproduced without the written permission of the Editor or the Author.

## Associate Membership Fees

Single Membership is \$30.00 per annum. Family Membership is \$45.00 per annum  
The Redland Researcher is free to all types of membership.

***Unless requested otherwise, the Redland Researcher is sent to members by e-mail***



## Library News

### Recent Acquisitions for the Library

(with thanks to the donors)

Title	Author(s)	Call No	Donor
Sketch Book of Burnett History	Fahey Schultz	1 QLD HIS SCH	Roslyn Roberts Oct 2016
Monto Remembers – Those who gave us 50 years of PEACE	Noel B Edwards	1 QLD MIL EDW	
Interim Mount Barker and Nairne Township Heritage Register	Fiona Gardner	1 SA HIS GAR	
Thanks Girls and Goodbye – The Story of the Australian Women's Land Army	Sue Hardisty	1 AUS HIS HAR	Debbie Pond Oct 2016
Family & Local History Sources Victoria	Francis Brown	1 VIC FAM BRO	GSQ Southern Suburbs Aug 2016
Early Families of Shepparton District	Eileen Torney	1 VIC FAM TOR	
Cornish Pioneers of Ballarat	Lillian Dell	1 VIC PIO DEL	
A Parish Finder for England	Graham Jaunay	1 AUS GUI JAU	
My Ancestor was in the British Army	Michael Watts	2 BRI MIL WAT	
Irish History and Genealogy	David Larkin	2 IRE GEN LAR	
Church of Ireland Parochial Records	Noel Reid	2 IRE GUI REI	

Two books of special interest are:

#### **“Sketch Book of Burnett History” by Fahey Schulz (1998)**

This is a collection of superb pen and pencil sketches of old buildings constructed, mainly between 1848 and 1900, in the Burnett Region of Central Qld; each sketch is accompanied by a short history. The author is a local artist and author. The sketches and histories clearly show, particularly in the early days, the harsh living conditions, a lack of adequate transport and the absence of medical services, which led to a great deal of suffering and untimely death.

#### **“Thanks Girls and Goodbye” edited by Sue Hardisty (1990)**

This book tells the story of the Australian Women's Land Army (AWLA) comprised of women, some as young as 16 years of age, who volunteered to work on farms during World War 2 to offset the critical labour shortage created by men leaving to enlist in the armed services, or to work in essential wartime industries. From September 1939 to December 1941, development of the AWLA was led by organisations such as the Country Women's Association and the Girl Guides Association. In mid-1942, however, with the urgent need to feed over 800,000 Australian and USA servicemen, as well as the civilian population, the Commonwealth Government announced support for the AWLA. At its peak the AWLA comprised about 7,000 full time and 6,000 part time or seasonal farm workers. While many “land girls” were from rural communities, a large number were city girls from occupations such as shop assistant, factory and office worker, domestic, and school leaver. The AWLA was disbanded in late 1945 at the end of the war. The book contains a collection of letters home to families, interviews with 13 “land girls” and copious photographs which describe, in fascinating detail, the often hard work “land girls” were required to do, the difficult conditions under which they lived and worked, and their character and courage.

Both books should be on everyone's “Must Read” list for 2017.

### Library Operations:

We are still four (4) Genealogical Research Assistants (GRAs) short of a full complement. It was difficult to keep the library open on our designated days in 2016; it was only possible because existing GRAs worked extra days each month. However this is not sustainable in the long run. If a similar situation occurs in 2017, we may have to consider reducing the number of “open” days. If anyone is able to fill these positions (or knows someone who might be interested), please advise me [Ph. 0421 979 229].

Ray Steele  
RGS Librarian



*Please consider volunteering. Our Society has a commitment to the Redland City Council to provide support to the public in return for the council's providing us with the use of their Cleveland Library's facilities. A GRA's commitment is three (3) hours per month.*

[Ed. RR]



# New technology and clairvoyance connects family

By **MARGARET JOHANSSON**

CHRISTEL Waters had always thought of herself as an only child with no close relatives.

That is, until the research powers of the internet found her a half-sister she never knew she had, and put her in touch with a "massive" extended family in the Ukraine.

Now, thanks to the wonders of communication technology, the Sunshine Coast resident regularly talks to Nadiya ) and her son (Christel's nephew) Alexander on Skype, and through Viber is able to exchange photographs and text, free.

"Nadiya wants me to come over there," Christel said last week.

"She said everybody, all the family and the church knows about me.

"But if I can't get to the Ukraine Skype this is the next best thing.

"Technology has made it possible, I don't now what we'd do without it."

Christel pointed out that Skype lets her see facial features and pick up on personalities, which letters cannot do.

The story begins just after the Second World War, when her father left his town on the border of Ger-

many and Poland and became lost in the post-war chaos.

His daughter Nadiya went to live in the Ukraine, where she had two sons who now have families of their own.

Two years ago Alexander, at Nadiya's urging, set the ball rolling to find where his grandfather had gone.

Unbeknownst to them, he had written to them several times but when they did not reply he assumed they had all gone – the real reason was that they lived in an area under Russian control and they were afraid to write back.

Likewise the father could not return for fear of being sent to Siberia.

He set about making a new life in Australia.

Desperate for information, Nadiya went to a clairvoyant, who told her he was not in Germany, and to look in Australia.

They thought this was silly, but after two years decided to start looking again.

Their knowledge of Australia was not great but in Germany the Red Cross, who does much to locate displaced persons, was putting the pieces together.

Technology came to the rescue again, unearthing the name of the ship he sailed in, the farm he worked on and even his re-

## SKYPE

Skype comes preinstalled by manufacturers on some computers.

If there is no Skype tile on your Start screen, from the Start Screen, type Skype, and then click on the Store category.

In the results, click on Skype, and then on the next page, click Install.

lationship to Christel.

Red Cross went to the archives and electoral rolls and asked the local Maroochydore police to take the letter of discovery to Christel.

And that is how Christel found her long-lost family. Quite soon she had a phone call from Alexander, who is the manager of Dulux Paints in Russia and speaks excellent English, and who then put her in touch with Nadia, who doesn't, but has Skype.

However Nadia taught German long ago and the sisters converse in German, a bit rusty at first but getting better, reports Christel.

"Julia (another relative) is going to send me the family tree so I will know where everyone fits in," she said. And she thought she was an only child!



## Reflections on the History of Our Society

The intention of this article is to provide RGS members (in particular new members) with a summary of significant events in the history of the Society. It has been compiled from the following-

**“RGS History” by Les McFadzen** circa 2012 (available in the RGS Library as Section 5 of the RGS By-Laws & Constitution)

**“Early History of Redland Genealogical Society” by Marel Donaldson** circa 2001 (available in RGS Archives)

In early 1981 a group of Redland Shire residents, interested in genealogy, attended “Trace Your Ancestors” classes at Cleveland High School, run by TAFE Ipswich and presented by Lyn Waldron, at that time President of the Genealogical Society of Queensland Inc. (GSQ). At the conclusion of the classes, Lyn suggested that the group form a club to provide encouragement and support for future genealogical research; the outcome was the establishment of the Cleveland Genealogical Club. At the first formal meeting of the group, on 1 June 1981, this name was changed to Redland Genealogical Society to cover the whole shire. On 9 November 1981, members voted that RGS become a branch of GSQ and this was approved by GSQ in February 1982; RGS was renamed **“Redland Genealogical Society - A Branch of the Genealogical Society of Queensland Inc.”**.

A constitution was prepared following the 1 June 1981 meeting. This has been updated over the years; the current **“RGS Constitution and By-laws”** are available for perusal in the RGS Library.

Initially, RGS meetings were held at members' homes; eventually however a suitable venue was located at Cleveland State School and meetings at this location commenced on 8 February 1982.

Early purchases for the RGS Library included **Nick Vine Hall's “English Parish Registers in Australia”**. In October 1982, the Cleveland Branch of the Bank of New South Wales donated a microfiche reader to RGS; soon after, microfiche for **“Qld Marriages and Deaths Index 1856-1899”** and **“NSW Birth, Death and Marriage Index”** were purchased.

An important turning point in the fortunes of the RGS was undertaking, as an Australian Bicentennial Project, the compilation of the Redland Pioneer Index, using Redland Shire Council Minutes, Rates and Letter Books. Formal application was made to Redland City Council (RCC), on 10 September 1986, for space in the RCC Library at Cleveland; this was approved by Council on 24 December 1986, and RGS moved into the allocated area on 11 February 1987.

RGS has continued to work co-operatively with the Redland Council Library since 1984. Some achievements include having RGS library holdings made available for borrowing by members through the RCC catalogue system, installation of two RCC computers with free access to Ancestry.com in the RGS Library, and a number of joint ventures with RCC, including shopping centre displays and presentations on genealogy at various Council libraries.

On 1 November 1999, RGS applied for registration on the Australian Business Register; this was granted and our ABN Number is 77 099 527 209. Subsequently RGS applied to the Office of Fair Trading Queensland for acceptance as an Incorporated Body in its own right; this was granted on 13 May 2011. However, the government required that we retain use of “Inc.” after GSQ, not following “RGS”.

The above facts do not present a comprehensive history of RGS; there is simply too much detail to be included in this brief article. However it is hoped that publication of this article will encourage members (particularly longer term members) to provide additional information, anecdotes and stories for publication in future editions of Redland Researcher and thus add heart and soul to this basic history.

Ray Steele  
RGS Librarian

*I fully endorse the sentiments expressed in the final paragraph. Our Society is in the fortunate position of having a number of foundation and long-serving members in our midst. I am certain that you will have a lot of information to share for future editions of this feature: the ups and downs in establishing RGS, accomplishments, and humorous incidents along the sometimes difficult path.*

[Ed. RR]

## Magazine Interest Group

Our group held a meeting in January, confirming current subscriptions and contact details of members and the societies they subscribe to. We are now 13 in number after a slight increase in members with the addition of Greg Glidden and Dianne Smith, who between them are subscribing to three societies, two overseas, in Hampshire and Huddersfield UK, and one, the Genealogical Society of Victoria, Australia, an old favourite. We are already enjoying their journals, as they circulate. There are now 20 magazines available for the enjoyment of members. New areas to be investigated for possible future subscription are Suffolk in the UK, and Western Australia.

Once again, interesting topics have been included in recent journals. The December 2016 issue of the Midland Ancestor, which is the journal of the Birmingham & Midland Society for Genealogy and Heraldry, included a report to that Society by S.O.G. Speaker, Celia Heritage "How Far Did Your Ancestors Travel?"

We offer a warm welcome to anyone interested in joining our group. All that is needed is an interest in family history, and the ability to enjoy reading. If you are already a member of a family history society other than Redlands, we would welcome the opportunity to read the journals that are supplied with a subscription, and of course you will have access to all magazines and journals currently circulating within the MIG.

Please contact me [Ph. 3821 0948 or email [rpmisson@tpg.com.au](mailto:rpmisson@tpg.com.au)] if you are interested in sharing or taking up a subscription in an area of interest.

*Pat Misson  
Convenor*

## Guest Speaker



*Greg Cope, Assistant Director, Access and Communication, National Archives of Australia, Brisbane - November 2016*

Greg's topic was "Remembrance Day: What does it signify?"

He provided an excellent presentation which focussed on the history of Remembrance Day, beginning with details of the actual signing of the Armistice in two railway carriages in a forest, some 65 kilometres NE of Paris, followed by a broadcast from the Eiffel Tower.

Greg also explained the reasons for various practices associated with Remembrance Day eg the wearing of Red Poppies and flags at half-mast. All present enjoyed Greg's very obvious knowledge of the subject and the manner of his presentation.

## Advertising in the Redland Researcher

As a means of contributing to fund-raising, the Management Committee approved that limited advertising may be accepted for publication.

Due to space constraints, advertisements will be restricted to "Business Card" size; the cost will be \$15.00 for placement in one (1) edition or \$25.00 for placement in four (4) consecutive editions.

Prospective advertisers will be interested to know that their business will be exposed to a wider coverage than just the Redlands. The "Redland Researcher" is distributed to society members, exchanged with other societies (Queensland, interstate & overseas) and published on our website.

Perhaps you have a family member or friend with a business?

Please contact me, Ph. 3824 7771, email [gregmarie.glidden@bigpond.com](mailto:gregmarie.glidden@bigpond.com) or at our General Meetings, if you know of anyone who may like to take up this offer.

*Greg Glidden  
Editor*



In loving memory of Freda Margaret Maris - nee Buchanan  
20/7/1923 – 25/3/2015

*(submitted by Cath Maris)*

This story was written many years ago by my mother-in-law, Freda M. Maris, for the Mulgrave Shire Historical Society, Gordonvale, Queensland. It gives an insight into life growing up in the 1920s and 1930's in Aloomba. It is only a brief overview of her early life; Freda went on to teach at Tully and Collinsville where she met her husband Edward Mervyn Maris.

My maiden name was Freda Buchanan. My parents, John and Bessie Buchanan had a cane farm round the corner within walking distance from Aloomba School and over the railway line. My parents originally came from Cumberland England in 1911. They first lived at Highleigh, over the river, near Gordonvale and worked for my mother's brother, John Cannon. The farm at Aloomba, in 1922, was the next step. This had been previously owned by the C.S.R. Company. I was born in 1923, and already had a brother Jack, and a sister, Maisie. This meant we all went to Aloomba School. My father was on the school committee, and my mother helped at school dances with bringing a cake and "cutting-up" the sandwiches in the afternoon.



We had milking cows and sold some milk, 3d per pint and 6d per quart. The Adam Petersen family bought milk for years. First, as a boy, Nils came with a billycan to collect the milk, then Charlie, then Victor, then Cristabel and Brian. Nils, while at Cairns High School won the Thallon Medal. This was competed for by children of Queensland Railway employees and was for best junior examination results.

I started school in 1928 at 4 1/2 years of age. The school admitted beginners each second year. This meant some were younger than 5, and some older. The assistant teacher was Miss Alice Rayment, from the Tablelands. At first she rented a cottage on our farm. Slates and slate pencils were in vogue at that time. Slate pencils were sharpened on the cement downstairs. We took a cloth to wipe our slates. I remember carrying mine in a wiper bag strung round my neck and shoulder. Ink wells were used as water wells and these fitted into provided holes in the top of the desk. When used as ink wells in higher classes, wooden handled pens and nibs were used for writing. Blots were often present.

I can't remember the number of children attending in those years, but Mr. Frank Money was the Head Teacher for some time. Avis, (Mrs. Milton Barret) was an only daughter. I remember when I walked to school, I passed one sign post. Approaching the corner, the sign read "SOUND HORN". On the other side of the same sign post was "KEEP LEFT".

A triangle hanging from a nail on the front veranda, with the appropriate small rod, summoned us to classes. Black boards and chalk were in use. Pupils used lead pencils in the higher grades.

The Committee built a shelter shed next to the school. The high beam across the centre was used for "BEAMY", played with a tennis ball, to be caught on the full. When the beam was missed, the ball went to the opponent's side. This game was also played under the school, where the beams were lower. "PUSS IN THE CORNER" made use of the upright posts under the school; a sort of musical chairs without any chairs. "JACKS" was a popular game with knuckle bones (from legs of mutton, I think). Girls (mostly) became adept at catching the bone in mid-air after first following a set of actions with various fingers. There was also a game with a tennis ball against the board wall at the side of the school. This involved a long list of actions, catching the ball on the hop, on the full, using first the right hand, the left hand. "ROUNDERS" was popular. Girls and boys played this together at the front of the school. The bigger boys could hit over the front fence and onto the road. I don't recall the girls doing that. A good hit like that meant being able to make a full circuit of the three markers before reaching HOME. Between markers, one could be hit (branded) with the ball. That meant you were OUT. Once enough players were OUT, the fielding side came in for their batting turn. "RED ROVER" used to turn up every now and then; one in the centre to catch others running from one side of the playground to the other. Those caught remained in the centre to help catch others. The strongest, fastest and wildest were always caught last. That was when the game became really heated!



"CALLY" had a team on each side of the school building and the ball was thrown over the roof. When the ball was caught on the full, that team called out and then ran round the building to 'brand' as many as possible on the opposite side, with the ball. Those branded then changed sides. The secret was to detect who had the ball. Cricket, football and basketball (now called netball) were also played and there was a cement tennis court at the back of the school, and of course, always "MARBLES" in season.

Pupils came by train (I suppose) from Quingilli and Meerawa till a school was built there in the early 1930s. Most children walked to school. There were some push bikes and also horses, which were kept in the horse paddock near the back fence. Gordon Cotteril used to ride "Midge" to school and Frank Connolly rode a dark coloured horse from the Gorge.

The older children had garden plots in the corner, bounded by the front road and private property next door. The boys grew vegetables, the girls, flowers. The water was supplied from Barr's wind-mill next door. The water came along a pipe and filled a 40 gallon drum set in the ground. There was a huge Reine tree in the front next to the road - great for shade. Other trees seemed to be mostly African tulips and later weeping figs were planted along Barr's side fence. The large shade tree was handy for having drill.....we followed various exercises for arms, legs, feet and trunk. Of course, marching was always good exercise. In those days we formed fours to march.

All the pupils were housed in the one school building, at first. It apparently was a bit crowded at times. The usual forms and long desks were used. A few boys in the higher grades sat along the side wall on a few small forms (especially made locally) and wrote on kerosene boxes. This must have been when the extension was added to the original building, making it longer.

Who remembers the large framed portraits of King George V and Queen Mary on the front wall - also one of Captain Cook and the aboriginal artifacts on the wall? There was an old clock on the press. It was old when I was young!

Drinking-water was from a tank, with water coming from the roof. We had a formal parade at the front of the building each morning and saluted the flag, which at that time was on a pole, in the front of the school. After 11 o'clock and lunch time, children lined up front and back steps in Indian file before marching in.

Inspectors came once a year. Members of Parliament visited now and then and gave us a holiday. I remember marching down to the railway station to see the Governor go through on a special train. There was a holiday from that.

An annual fancy dress ball was a big occasion, with regular practices at the hall after school, marching around in the Grand Parade to the Repasz Band March played on the piano. The big night was always an occasion. My father was on the Hall Committee and was in the ticket box. I think 2 shillings (20 cents) was the charge at the door. Part way through the night all received a cup of tea, plus sandwiches and then cakes, taken round by willing hands. There was always a good attendance for Euchre played on trestles set up on the stage. Mrs. Money played the piano, John Barr the trumpet and Cecil Street (1st World War) always popular on his accordion. "Cricket" Christensen must have been M.C. for years. Dancers I remember were the Waltz, the Schottische Mazurka, Lancers (a square dance), Velita and Pride of Erin. For a Monte Carlo Waltz, a card of each denomination was put on the wall in each corner. By drawing a card, eventually each corner was eliminated, till one only couple became the winner. Lucky Spot was a certain spot on the floor, decided before the dance commenced. The medley was always last with more than one type of dance.

I eventually reached Grade 7, and studied for the Scholarship examination. Mr. Money used to take Marjorie Cole and me for extra work after school. Then we went out to the back veranda and used the sewing machine as a table to copy down past scholarship papers for homework, while Mr. Money swept the school. I remember we were given New Zealand to draw free hand in the Geography exam for Scholarship. I don't remember doing that too well. However, I can still draw a fair copy of Australia.

I went to Cairns High School. The rail motor left Aloomba at 7.20am. I used to board at a Cairns home during the week; went in Monday morning and came home Friday afternoon. I remember Otto Assman used to come by push bike from the family farm, Quingilli way, leave his bike at a local home, catch the rail motor to Cairns, walk from the railway station at Cairns to the High School, then do this in reverse each afternoon 5 days a week. After some time, students were able to catch the Kuranda train to Upward Street crossing and walk to High School from there; however, no relief in the afternoon, before catching the afternoon rail-motor home, leaving Cairns about 5pm.

After 2 years at High School 1936-1937, I went to Turbot Street Teachers' College 1938-1939. It is no longer there. It was behind the old Canberra Hotel (no longer there) across from the side of Central Station, in Edward Street.

In 1940, at 16 1/2 years of age, I was appointed to Aloomba School. I shared half the building with Mr. Geo McLean, the Head Teacher. I had Preparatory I, Preparatory III and Grade 2 for my first year, maybe 30 or more children. I still remember most of the children's names, and all of Grade 2 - Don Leighton, Colleen Moss, Godfrey Bowers, Joy Greenwood, Rina Poglis, Luigi Svanette, Clas Moller, Pat Morris and Ted Dore (I think). They were all of a good standard, and, of course, all well-behaved. I remember one pupil telling me, "Mummy said to work hard at school, so you can get a good job like Freda." I believe that she did, too. I would have been the first pupil to become a teacher at Aloomba. Hazel Leighton must have been next. I understand Dorothy Lloyd and Norma Bowers also became teachers (all this from memory, of course).

In 1941, the new room was added, and I moved in there. Around this time, in the war years, as I remember, the school and community raised enough money to buy a Bren Gun Carrier for the War effort.

In 1942, schools were closed along the coast, and most families evacuated further south, as there was a threat of Japanese invasion. Mr. V. Wood was then in charge of the school. My parents remained in Aloomba. I received a transfer to Euluma Creek, Julatten, a one-teacher school, up on the Tablelands behind Mossman. I have often wondered since what my parents thought of my being sent at that time into the unknown. I was 18 1/2 and they had to drive me into Cairns to catch a train at 6am. I changed trains at Mareeba, and went out on the Mt. Molloy line to Julatten, one train a week.

Does anyone remember the travelling shows that came to the local Hall? One I remember was a couple, who used volunteer school children to present a concert - a hard way to make a living. I remember one contribution was "The Wedding of the Painted Doll", with provided costumes - Marjorie Cole was the mother of the bride, Nessie Ferguson and I were the Dollies from the Follies.

The Good Manners Chart appeared for instruction now and then, with the Golden Rule - "Do unto others as you would they do to you" - also, "Honour your parents and teachers". Learning tables and spelling by rote from charts was the "in" thing. This seems to be despised now, but I belong to the "old school". Learning poetry by heart has gone out of fashion, but, to me, it was a form of memory training. Both my husband and I still recall passages from many poems, and it is a pleasure to re-read them. A few years ago, I bought copies of past reading books - not the old red ones - but the ones with various coloured covers. They contain quite a bit from the old red books.

Pre-war Aloomba had a hotel, two stores, a cafe, a bakery, a branch of a Gordonvale butcher shop, a local hall, a railway station, which doubled as a post office, a bowling rink, a football team and field (across the road from the front of the school), a cricket team, and public tennis courts. An employee from each of two grocery stores in Gordonvale travelled round the Aloomba area (including farms), once a week, to list items required and these were then delivered. An ice cream cart, drawn by a horse, also came once a week on a school day, 3d and 6d for cones. Blocks of ice and soft drinks were also delivered from Klarneins in Gordonvale. Better roads and cars enabled most people to travel more and mix further afield. Aloomba became less self-contained.

Does anyone remember Ron Grainer? He had a younger sister, Margery, and his father managed the local store, owned by Miss Templeton from Gordonvale. Years later I read where, for the B.B.C. in London, he composed the theme music for some of the famed black and white T.V. shows; 'Dr. Who' was one as I recall. He is now deceased.

*For those too young to remember - 3d (threepence=2cents) - 6d (sixpence=5cents) - (quart is 2pints (quarter of a gallon)). [Ed. RR]*



Oh dear - I remember all of them  
 If you remember some of these photos -  
 you are old!  
 If you remember most of these photos -  
 you are very old!  
 If you remember all of these photos -  
 you are antediluvian!  
 If you can't remember any of these photos -  
 you have Alzheimer's!

*(submitted by Annette Hall)*





## IT PAYS TO KEEP LOOKING

by Audrey Warner

Here I go babbling on about Trove again. It really is worthwhile going back again and again, as new entries keep bobbing up all the time.

I thought that I had found just about all I could about my great grandfather, William Underwood, but recently, articles from the Beaudesert Times have been appearing in Trove, and, in the issue of 20<sup>th</sup> August, 1915, there was an article about the pioneer settlers of Logan, including quite a long piece referring to William Underwood of Eight Mile Plains.

William had died in 1901, but the article gave a very full account of his life from the time he was born in Devizes, Wiltshire, in 1827, through his time in the "Fighting Twelfth" (Suffolk) Regiment with whom he served in Ireland, England, Mauritius, at the Eureka Stockade, in Port Arthur, then Sydney, and in the Maori Wars where he was injured. I had a copy of his Service Record, so knew all this to be true. I also knew that, following his injuries, he was discharged after more than 18 years' service and returned to England. I must admit, though, I was excited to read that he had been sent to a hospital in Nutley in England and, while there, was under the care of two nurses, one of whom was Catherine Stuart and the other Florence Nightingale. Both of these ladies were knighted.

So that's another paragraph for my Family History thanks to Trove!

After being released from hospital, he began a business in Birmingham, but then came to Queensland with his family and eventually settled at Eight Mile Plains where he built the Commercial Hotel (later burnt down). He did much for the advancement of the Eight Mile Plains/Mt. Gravatt area in the way of furthering the Post Office, schools and church. I believe that he also operated a tram service from his other hotel at Mt. Gravatt. When he died in 1901, he was living at the Mt. Gravatt Post Office which had once been a stopover place for Cobb & Co. coaches.

What an interesting person Great Grandfather William must have been. I must tell you too, that all the time he was wandering around the world doing military service, his wife, Frances, and their older children went along with him.



## Members' Interests

Please contact Members through the Society's email: - [redlandgs@gmail.com](mailto:redlandgs@gmail.com)

Member's Name: **John Ryan**

Membership No: **78**

Surname	Year/ Range of Years	Town/City	County/State	Country
Atherton	1800-1900	Melbourne	VIC	AUS
Cameron	1810	Fort William	INV	SCT
Chick	1890-1900	Murchison	VIC	AUS
Cohen	1850-1918	Kisheuef		RUSSIA
Cullen	1830-1880	Redcross	WIC	IRL
Flanagan	1800-1860	Roscommon	ROS	IRL
Frawley	1833	Sixmilebridge	CLA	IRL
Gilmore	1883	Wilcannia	NSW	AUS
Hoare	1778	Wexford	WEX	IRL
Lewis	1860-1900	Murchison	VIC	AUS
Love	1791	Sydney	NSW	AUS
Marks	1850-1960	Melbourne	VIC	AUS
McLeod	1822	Ullapool	ROC	SCT
O'Loughlan	1820	Cavan	CAV	IRL
Ryan	1829		CLA	IRL
Zöller	1858	Brisbane	QLD	AUS

(continued over)

## Members' Interests (continued)

*Member's Name:* **Rosemary (Penny) Stewart***Membership No:* **207**

Surname	Year/ Range of Years	Town/City	County/State	Country
Baker	to 1850		ESS	ENG
Baker	1600-1700		ESS	ENG
Baker	to 1850		SFK	ENG
Boylett	1500s		BRK	ENG
Boylett	1545-1550		SRY	ENG
Cameron	1700-1800s		INV	SCT
Carey	1700s		COR	IRL
Carr	1700s		KER	IRL
Clark	1700-1850		ESS	ENG
Hardaker	1800s		YKS	ENG
Kohlhoff	1600s			DEU
MacCarthy	1700-1800s		COR	IRL
Robinson	1800s		NTT	ENG
Thistlethwaite	1500-1800s		YKS	ENG
Stevenson/Stephenson	1700-1850			INDIA
Tremenheere	to present		CON	ENG
Trowsdale	1600-1700s		YKS	ENG
Turner	1820-1950		LND	ENG
Wade	to 1850		SFK	ENG

*Member's Name:* **Barbara Geary***Membership No:* **61**

Surname	Year/ Range of Years	Town/City	County/State	Country
Baker	1832	Agra		INDIA
Barnes	1852	Bath	SOM	ENG
Bentley	1839	Port Macquarie	NSW	AUS
Chapman	1809		NFK	ENG
Cullen	1883	Hobart	TAS	AUS
Freeman	1788	Weston Colville	CAM	ENG
French	1796	Merriott	SOM	ENG
Geary	1862	Banbridge	BELFAST	NTH IRL
Ibbotson	1855	Greenvale	DBY	ENG
Lown	1812	Martham	NFK	ENG
McGreg	1883	Paisley	RFW	SCT
Osborne	1807	Merriott	SOM	ENG
Ralston	1864	Banbridge	BELFAST	NTH IRL
Waters	1846	Weston Colville	CAM	ENG

### Family & Local History Conference

"Footsteps in Time" 19 - 21 May 2017

This conference will be held at the Gold Coast Community Centre, Southport. "Early Bird" registration and payment must be received by midnight 1 March 2017. Costs are \$80 Saturday only, \$40 Sunday only or \$120 for both days. Three master classes, at \$7.50 each, will be held on Friday on the topics of DNA, and Archival Preservation.

Details are available on the following websites:

Subjects <http://www.footstepsintime2017.com.au/speakers.html>

Speaker profiles <http://www.footstepsintime2017.com.au/speakers-profiles.html>

Registration <http://www.footstepsintime2017.com.au/early-bird-registration.html>

Programme <http://www.footstepsintime2017.com.au/conference-programme.html>



# MAKING THE MOST OF TROVE

## MEET THE TILDE '~'

Catriona Bryce



**H**OPEFULLY by now you're familiar with the wonders of Trove for family and local history research. History comes alive through more than one million family notices, articles and advertisements. Are you making the most of Trove? Do you want to search for a common name but getting too many results? Here's a tip which will help.

The tilde is a symbol on your keyboard which you can get to by holding down the shift key and pressing the grave accent (to the left of the number 1). This is how to tell Trove how close together the words you're searching for should be. Say you have a common surname like White, Black or County? Try this search: add a tilde, Mr or Mrs, and the surname in inverted commas and then add the tilde and a number immediately after that. See below how it would look in Trove:

This tells Trove to look for the words 'mr' and 'white' within three words of one another. This will increase your chances of finding your ancestors. Experiment with this search and see what you find.

You can find more search tips like this in Trove's Help Centre: <http://help.nla.gov.au/trove/using-trove/finding-things/power-searching>

This is the first of six short 'blogs' from Catriona Bryce of Trove Support, Collaborative Services Branch, National Library of Australia.

The topics are:

- Making the most of Trove: meet the tilde, '~'
- Making the most of Trove: using tags to work together
- Making the most of Trove: using a group profile to work together
- Making the most of Trove: listing your way to success
- Making the most of Trove: printing from Trove's digitised newspapers
- Making the most of Trove: how to cite newspaper articles

Catriona asks:

If you feel they are useful, and there are other topics you'd like covered, please let me know and I'll look at doing another series later in the year.

Thank you again for your support and happy troving! ◀

**Catriona Bryce**

Trove Support | Collaborative Services Branch  
National Library of Australia, Purkes Place,  
Canberra ACT 2600 | ph: 02 6262 1033 |  
email: [cbryce@nla.gov.au](mailto:cbryce@nla.gov.au)

"mr white"~3

**Search**

☐ Available online ☐ Australian content ☐ In my libraries **Advanced**

# MAKING THE MOST TROVE

Catriona Bryce

## LISTING YOUR WAY TO SUCCESS

**H**OW do you organise your research? Have you found yourself losing important articles in a pile print outs? Trove lists can help.

### To create a new list in trove:

1. Log in to Trove
2. Once you have found the first item you want to add to a list, click on the title to go to the item's detail page;
3. Click on 'Lists' in the 'User activity' box to the right of the record's title
4. Click 'Add to list';
5. Fill in the name for your new list and click 'Add to list'

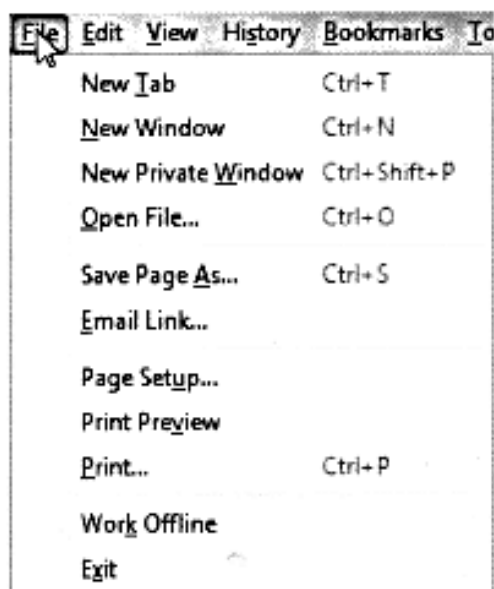
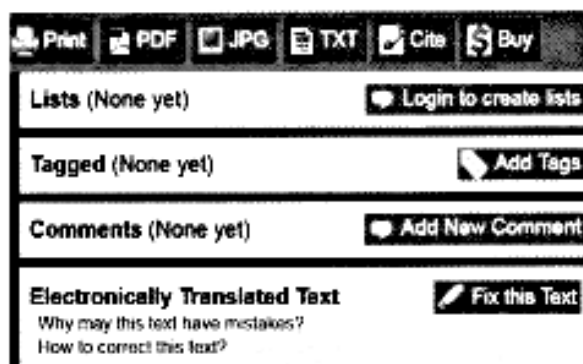
Lists can be any collection of records which interest you. Some interesting examples include lists of obituaries related to people buried in Toowong Cemetery, Australian out of copyright music, different types of lawn mowers and book club reading lists.

For more information about lists, including a short video which shows you how to make one, visit Trove's Help Centre: <http://help.nla.gov.au/trove/using-trove/creating-contributing/lists>

## PRINTING FROM TROVE'S DIGITISED NEWSPAPERS

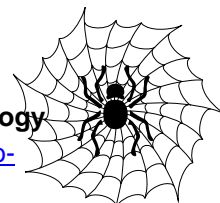
### To print an article:

1. Click the 'Print' button at the top of the left-hand column, above the electronically translated text. The article will open in a new window and your browser will ask you to select a printer.
2. Use your browser's print function to print the image.



For more information about printing articles in Trove, visit Trove's Help Centre: <http://help.nla.gov.au/trove/using-trove/digitised-newspapers/articles-in-digitised-newspapers>

## Wandering Through the Web



### “LostCousins” Newsletter

<http://lostcousins.com/pages/members/home.mhtml>

A number of our members already subscribe to this free newsletter. Those who would like to can use the above link. There are many good tips and updates on latest research resources and information on a very wide-range of topics. Notices are included on “special offers” available, including short periods of Free research on websites that otherwise cannot be accessed unless a paying member. Subjects are indexed for accessing earlier editions.

A cross-section of topics, during 2016, included-

- How the homeless were recorded in the Census
- Police returns on homeless persons
- How surnames were introduced by the Normans in England
- Is DNA testing worth the money?
- My grandfather was illegitimate, or was he?
- Reviews on books such as “Researching Adoption”

The following link takes you directly to an article that contains a table of vicar’s fees in a 1707-1787 parish register-

<http://lostcousins.com/newsletters2/latejul16news.htm#Vicars>

### History at Home - a Guide to Genealogy

<http://www.homeadvisor.com/r/guide-to-genealogy/#.WlQ2oFxBZmU>

Much of the information may be known to us but you may enjoy browsing through the site, if only “for a refresher”. Subjects are wide-ranging. The links are predominantly to USA sites but useful information can be found.

### Brigham Young University (BYU) Family History Library

<https://sites.lib.byu.edu/familyhistory/classes-and-webinars/youtube-videos/>

This library (Utah USA) maintains a YouTube channel of family history instructional videos available on YouTube. Our member, Greta Brown, drew attention to a number of these, including-

“Don’t you believe it - Debunking Genealogical Myths”  
[https://www.youtube.com/results?search\\_query=Don%27t+you+believe+it+-+Debunking+Genealogical+Myths+](https://www.youtube.com/results?search_query=Don%27t+you+believe+it+-+Debunking+Genealogical+Myths+)

“Locating your Ancestors exactly from maps and gazetteers”

[https://www.youtube.com/results?search\\_query=Locating+your+Ancestors+exactly+from+maps+and+gazetteers](https://www.youtube.com/results?search_query=Locating+your+Ancestors+exactly+from+maps+and+gazetteers)



Australian Government



NATIONAL  
ARCHIVES  
OF AUSTRALIA

16 Corporate Drive, Cannon Hill

Phone: (07) 3249 4200

Website: [www.naa.gov.au](http://www.naa.gov.au)

**Important:** Before visiting, refer to “*Step-by-step guide for researchers*” in their website for requirements for ordering & accessing records and using Reading Room.

#### Hours & Facilities:

Wednesday to Friday 9am - 4.30pm

Closed Public Holidays

A public kitchen with tea and coffee facilities is located on the Ground Floor.

Free on-site parking is available

The strengths of their Brisbane facility collection are the immigration records that date from the 1850s; the post office and mail service records, and photographs that are a rich source of information for local history.

### Queensland State Archives

435 Compton Road, Runcorn

Phone: (07) 3131 7777

Website: [www.archives.qld.gov.au](http://www.archives.qld.gov.au)

**Important:** Before visiting, refer to “*Public Search Room*” in their website for requirements for using the search room and for accessing records.

#### Hours & Facilities:

Open Monday to Friday, 9am to 4.30pm

Closed Public Holidays & Christmas/New Year period

Open second Saturday each month, 9am to 4.30pm

The Readers Lounge has tea & coffee facilities, a refrigerator and microwave.

Free on-site parking is available.

Visit their website for details of a free taxi service from Fruitgrove Railway Station on Tuesdays.

The QSA holds informative Seminars and Events throughout the year, on their premises and at external venues. Check “*What’s on*” in their website for details or to arrange subscription to their free “*qsa bulletin*”.





## Where to get your Certificates

**For reference to all details and costs check the relevant Registrar's Office**

**Our prices are based on Historical Certificates**

### Queensland

Registry of Births, Deaths & Marriages  
110 George Street, Brisbane. 4000  
PO Box 15188, City East, Qld 4002  
Phone: 1300 366 430  
Hours: Monday-Friday 8.30am – 4.30pm

**\$20 Historical Image - via email**

**\$28 Historical Certificate – includes postage**

<http://www.qld.gov.au/law/births-deaths-marriages-and-divorces/family-history-research/>

### New South Wales

NSW Registry of Births, Deaths & Marriages  
GPO Box 30, Sydney, NSW 2001  
Phone: 13 77 88

**\$31.00 (with Registration number)**

**\$44.00 (w/out number, includes 10 year search)**

[www.bdm.nsw.gov.au](http://www.bdm.nsw.gov.au)

### Transcription services:

[www.joymurrin.com.au](http://www.joymurrin.com.au)

<http://www.transcriptions.com.au/>

### Victoria

Registry of Births, Deaths & Marriages  
GPO Box 5220, Melbourne, Vic 3001  
Phone: 1300 369 367

**\$21.00 Uncertified Historical Image - via email**

**\$30.20 Historical Certificate – includes postage**

[www.bdm.vic.gov.au](http://www.bdm.vic.gov.au)

### Australian Capital Territory

Registry of Births, Deaths & Marriages  
GPO Box 158, Canberra City, ACT 2601  
Phone: (02) 6207 3000

**\$42.00 + \$8.00 postage** (Pre 1930, apply to NSW)

Historic Death and Marriage Indexes now available.

[www.ors.act.gov.au](http://www.ors.act.gov.au)

### South Australia

Births, Deaths & Marriages  
Consumer & Business Services  
GPO Box 1351, Adelaide, SA 5001  
Phone: 131 882

**\$46.00 - includes postage**

<http://www.cbs.sa.gov.au/wcm/births-deaths-marriages/>

### Western Australia

Registry of Births, Deaths & Marriages  
PO Box 7720, Cloisters Square, Perth, WA 6850  
Phone: 1300 305 021

**\$31.00 – includes postage (with Registration number)**

[www.bdm.dotage.wa.gov.au/](http://www.bdm.dotage.wa.gov.au/)

### Tasmania

Registry of Births, Deaths & Marriages  
GPO Box 198, Hobart, Tasmania 7001  
Phone: 1300 135 513

**\$45.88 – includes postage**

[www.justice.tas.gov.au/bdm/home](http://www.justice.tas.gov.au/bdm/home)

### Northern Territory

Registry of Births, Deaths & Marriages  
GPO Box 3021, Darwin, NT 0801  
Phone: (08) 8999 6119

**\$43.00 – includes postage**

(1856-1863 = NSW) (1863-1870 = SA)

[www.nt.gov.au/justice/bdm](http://www.nt.gov.au/justice/bdm)

### New Zealand

Registry of Births, Deaths, Marriages & Citizenship  
PO Box 10-526, Wellington 6143 New Zealand

**\$NZ26.50 (1848-1874) - \$NZ20.40 (1875+)**

Visa, MasterCard & American express accepted

[www.bdmhistoricalrecords.dia.govt.nz/Home/](http://www.bdmhistoricalrecords.dia.govt.nz/Home/)

### Disclaimer-

Prices, addresses, etc. are correct at the time of going to print. Use this as a guide only as prices are subject to change. If you do find incorrect information, I would appreciate your advice.

[Ed. RR]

### Queensland Family History Society Inc.

**58-60 Bellevue Avenue, Gaythorne 4051**

Phone: (07) 3355 3369

Website: [www.qfhs.org.au](http://www.qfhs.org.au)

This venue is accessible by either train or bus and parking is available in the street.

Redland members are reminded that the Redland Branch is an Associate Member of QFHS and the membership cards are available from RGS Secretary, Dianne, 3286 9466, (Borrowing fee is \$2). A Day Charge will be made by QFHS if you do not have this card.

*There are no stairs at this location.*

### Genealogical Society of Queensland Inc.

**25 Stackpole St (cnr Mt Gravatt-Capalaba Rd)**

**WISHART 4122**

Phone: (07) 3349 6072 Email: [info@gsq.org.au](mailto:info@gsq.org.au)

Website: [www.gsq.org.au](http://www.gsq.org.au)

Opening hours:-

Mondays & Public Holidays:	Closed
Tuesdays to Fridays:	10am to 3pm
2 <sup>nd</sup> & 4 <sup>th</sup> Wednesdays:	6pm to 9pm
Saturdays:	12noon to 4pm
Sundays:	Interest Group meetings only