

Redland Researcher



The newsletter of
Redland Genealogical Society Inc.
a branch of Genealogical Society of Queensland Inc.

Issue No. 132

August 2019

Redland Genealogical Society

a branch of the Genealogical Society of Queensland Inc.

PO Box 605

Cleveland Qld 4163

Email: redlandgs@gmail.com

Website: www.rgs.net.au

2019/2020 Management Committee

Patron: Les McFadzen

President	Helen Veivers
Vice President	Kevin Hughes
Secretary	Dianne Smith
Treasurer	Irene Salvatierra
Assistant Treasurer	Yvonne Weston
Membership Officer	Annette Hall
Archivist	Janelle Everest
Displays Co-ordinator	Elaine Speck
Newsletter Editor	Greg Glidden
Librarian	Bob Aldred
Committee Member 1	Lyn Smyth
Committee Member 2	Pat Misson

Life Members 2010

Denise Brady (Foundation Member), Marel Donaldson (Foundation Member)

Kaye Barber, Pamela Gilbert, Elaine Speck, Glenda Webb

Life Member 2011 Les Callaghan, **Life Member 2013** Les McFadzen

Life Member 2016 Jeanne Dixon, **Life Member 2019** Pat Misson

Membership: Membership is **either by** joining the Redland Genealogical Society Inc. as an Associate Member **or by** joining the Genealogical Society of Queensland Inc. **and nominating to be a Redland Branch Member**; refer page 3 for Membership Fees. *Associate Membership of RGS does not entitle Members to free use of GSQ facilities.*

Meetings: The Management Committee of the Redland Genealogical Society meets on the first Wednesday of each month, February to December, commencing at 2.00pm.

The General Meetings of the Redland Genealogical Society are held on **the second Wednesday of each month**, February to December, **from 12:15pm to 2:30pm**, at the Donald Simpson Centre, Bloomfield Street, Cleveland, parking available on site. An entry fee of \$2 applies at each meeting. **The Annual General Meeting** is held on **the second Wednesday in July**, followed by the General Meeting. Meetings are not held in January.

The Society's Collection such as books, microfiche, CD-ROMs etc, which contain resources for world-wide research, are held in our Library Room in the Cleveland Library, corner Middle and Bloomfield Streets.

Volunteer Genealogical Research Assistants (GRAs) are on duty to assist Members and the general public -

Tuesdays and Thursdays: 9.30am - 12.30pm Saturdays: 12.30pm - 3.30pm

Financial Associate and Redland Branch Members have access to this Room at any time that the Cleveland Library is open.

GRAs: Bob Aldred (Librarian), Kaye Barber, Greta Brown, Margaret Clark, Jeanne Dixon, Annette Hall, Karen Hawkes, Margaret Johnson, Brenda Jones, Bev McFadyen, Les McFadzen, Pat Maclean, Cath Maris, Pat Misson, Jan O'Brien, Irene Salvatierra, Dianne Smith, Helen Veivers, Audrey Warner, Charlotte Wruck.

A reminder to GRAs: *If unable to attend on your rostered day, please arrange to swap duty with another GRA.*

Local History Collection: The Redland City Council's local history and heritage collections are housed in the Cleveland Library. Angela Puata is Redland City Council's *Local History Librarian*; her assistant is Gillian McNeill.

A Note from the Editor

Prices have increased for most Births, Deaths and Marriage certificates. Prices on page 16 have been updated.

Annual General Meeting

Our AGM was held Wednesday 10 July 2019. The annual reports presented at the meeting are published in this August edition.

Management Committee Members

2018/19 members are continuing in their same roles for 2019/20, apart from the following changes: Bob Aldred replaces Pat Misson as Librarian. Pat will continue as a Committee Member in place of Dawn Montgomery. Thank you Dawn for your contributions over the past twelve months and a big welcome, Bob.



The 2019/20 Management Committee (Absent: Elaine Speck)



Life Membership

At the Annual General Meeting, Life Membership was bestowed on Pat Misson, our retiring Librarian, for her work on behalf of the Society in many roles. Pat has been a hard-working, dedicated librarian. In addition to, indeed often during, her work in this busy role, she has contributed to many other Society activities, always willing to help wherever needed.

Congratulations Pat, well-deserved!

Greg Glidden

Contents

2019/2020 Management Committee;	Membership/Meeting Details;	Library Room;	GRAs/Hours of Duty	2
A Note from the Editor;	Contents;	Membership Fees		3
President's Annual Report				4
A Step Back in Time in the History of Cleveland				5
Treasurer's Annual Report				6
Librarian's Annual Report				7
Beenleigh Historical Village and Museum (and Card Index);	Newsletter Editor's Annual Report			8
Annual Reports - Family Tree Maker User Group;	Membership Officer;	Facebook;	Writing Interest Group	9
"Cork and Cobh"				10
Annual Reports - Magazine Interest Group;	Displays;	Archivist		11
"Recreation in the 1950s"				12
Brick Walls - a problem-solving session				13
"A Mother's Wish";	Members' Interests			14
RGS Logoed Shirts;	National Archives Information;	Qld State Archives Information		15
Where to get Your Certificates;	QFHS Information;	GSQ Information		16

The opinions expressed in this Redland Researcher are not necessarily those of the Researcher Committee, nor of the Redland Genealogical Society. The responsibility rests with the authors of submitted articles; we do not intentionally print inaccurate information. The editor reserves the right to edit, abridge or reject material.

Copyright

Articles published in the *Redland Researcher* are copyright to the Society and the authors. While articles may be copied for personal use, they may not be reproduced without the written permission of the Society and the Author.

Associate Membership Fees

Single Membership is \$30.00 per annum. Family Membership is \$45.00 per annum

The Redland Researcher is free to all types of membership.

Unless requested otherwise, the Redland Researcher is sent to members by e-mail

President's Annual Report:

Helen Veivers

When I perused the minutes of meetings for the Redland Genealogical Society for the past 12 months it confirmed to me what a busy year the Society has had. It is with great pleasure that I present the President's report for 2018/2019. The Society could not have achieved what it has without the efforts of your Management Committee. Each and every one of them has contributed significantly – it has certainly made my job an easier one. Firstly, I would like to thank Vice President, Kevin Hughes – Kevin sets up and manages the sound system at our meetings with minimal fuss. Our website continues to function thanks to Kevin's efforts – he's certainly had some trying times with it during 2018-2019. As well, Kevin has transported equipment to and helped set up at various displays during the year. Thanks Kevin! Dianne Smith, our Secretary, has once again done a fabulous job as Secretary of our Society. While her email program may have given her a good deal of grief during the year, Dianne has always managed to produce and distribute very comprehensive Minutes of meetings along with the myriad of other tasks required of her as Secretary. My heartfelt thanks, Dianne, for the wonderful job you've done! At meetings we're always made very aware of the financial position of our Society – Treasurer, Irene, provides her reports in a manner that is easily understood by all present. Accounts are always paid in a timely manner, even when they involve complex transactions to the United Kingdom. Thanks, Irene, for the great job you've done yet again! Yvonne Weston has assisted Irene in the role of Assistant Treasurer as well as updating the Society's Facebook page with items of interest and photos. Thanks Yvonne for what you've done in both of these roles. Pat Misson, our retiring Librarian, has, once again, demonstrated how our Library can function effectively with a minimum of fuss – this doesn't mean that Pat hasn't worked very hard in the background – she's certainly done this, and her hard work has been reflected in the seamless operation of the Library. Thanks, Pat!! Another person who has worked very hard during the year is our Displays coordinator, Elaine Speck. Elaine attends every display, if at all possible – is famed for being the best seller of "Beginner's Kits" – nobody else can match her expertise!! Thanks, Elaine, for all your work during the past twelve months. Annette Hall, our Membership Officer, keeps our membership records in tip-top shape. She's also the convenor of the Magazine Interest Group and has been very successful in gaining new members for the group. Thanks, Annette! "The Redland Researcher" is always a great read. While many other organisations appear to struggle with having sufficient material for their publications, Greg, in an almost magician-like manner, seems to always have plenty. Thanks, Greg, for the 2018/2019 editions. Greg's also produced some comprehensive lists of genealogical facilities throughout Australia to which all of us are able to refer when searching for additional information. Thanks, Greg for this additional work. All organisations need to ensure that documents produced for and on behalf of the Society will be stored securely and in a manner in which they can be easily retrieved when needed – this, of course, is the archivist role. I'd like to thank Janelle Everest for performing this role. Finally, our two additional Committee members, Lyn Smyth and Dawn Montgomery – Lyn has performed the role of Welcoming Officer at meetings and Dawn as Consultant on a number of key issues. Thanks, Lyn and Dawn!

I've always said that our Library is central to our Society – it is here that the very real work of genealogy is achieved. Our Society is indeed fortunate to have sole access to the room provided by the Redland City Council through the Redland Libraries Service. This facility is greatly appreciated. A Memorandum of Understanding between the 'Council and our Society is almost ready for enactment.

During 2018/2019 we have continued to build on the strong relationship with Library staff, particularly with Branch Librarian, Kim English, and Local History, Librarian, Angela Puata. The "findmypast" Library subscription proved so popular in the general community that it was very difficult for our members to access it in our Library – we solved this by purchasing a subscription. This has been a very useful addition to our available resources. As mentioned previously Pat Misson has managed our Library in an exemplary manner – she's always so willing to share her very extensive family history related knowledge and to help others grow as genealogists. Pat has been ably assisted once again by the group of Genealogical Research Assistants (GRAs) who volunteer their time on Tuesdays, Thursdays and Saturdays to enable the Society to help others with family history research. The Library could not and would not operate without their ongoing support and expertise. My gratitude is extended to each and every one of the GRAs. What you do is absolutely invaluable!

Thanks to the co-ordinators of the various Interest Groups and to all who have volunteered to help at the various events organised by our Displays Coordinator. These displays are a vital mechanism for reaching out to the community and for inviting community members to begin the search for ancestors. A final "thank you" - to our Patron, Les McFadzen, who has continued to contribute to the Society's success in so many ways, convening the Family Tree

Maker Group being one. Thanks, Les! Thank you one and all for your efforts throughout the year – it is you who make the Redland Genealogical Society the successful organisation that it is.

We've been fortunate to have the benefit of many wonderful Guest Speaker at meetings during 2018/2019. We were enthralled by Col Sutcliffe's presentation on the "Education of Outback Children from 1901" – it brought back memories for many. Peter Dunn's presentation on "Military Locations in the Brisbane and Redlands Areas during WWII" resulted in a good deal of ongoing interest and who could forget Elaine Speck's commentary to accompany the Leona Kyling material given to us by the Local History Librarian, Angela Puata!

Society membership has fluctuated throughout the year. GSQ Redland Branch membership has remained fairly constant, but there has been a reduction in Associate Membership. Reduction in membership is being reported by Family History Societies throughout the world at present. Your Management Committee discussed the issue at its latest meeting.

Two trips were enjoyed during the year. The first was a trip to the "Life in Irons" Exhibition at the Museum of Brisbane for a tour led by historian, Dr Jennifer Harrison. Jennifer provided some excellent insights into items in the exhibition. The second was a recent day trip to the Beenleigh Historical Village – enjoyed by all participants despite inclement weather.

We organised two Silent Auctions during the year with members donating goods they no longer needed. The proceeds from one of these was forwarded to the QCWA Rural Crisis Fund. At the December meeting we enjoyed another beautiful lunch prepared by the Donald Simpson Centre – tables beautifully decorated and food enjoyed by all. The event was made more enjoyable by Annette Hall's elfin fun.

A developing issue during 2019 has been the proposed amalgamation of the Genealogical Society of Queensland (GSQ) and the Queensland Family History Society (QFHS). While no firm decision has yet been made, regular communiques to members are ensuring that members of both Societies are aware of progress. One of the largest hurdles facing the Amalgamation Committee is the location of a suitable premises. The concept of a History Hub is being considered – a place where the amalgamated society would be situated, along with various other history groups. This could potentially be a tourism drawcard. I guess some of you are concerned about what will happen to our Society which is a branch of one of the amalgamating Societies – I am in a very good position to ensure the best interest of our Society is maintained.

2018/2019 has been a busy and successful year for the Redland Genealogical Society. Once again, thanks to all who volunteer. In closing, I wish those members newly elected to the committee a successful year in office and to all members a year of exciting research.

A Step Back in Time in the History of Cleveland



At May meeting we viewed materials collected by local identity, Leona Kyling, over her lifetime. This was made possible by the Local History Librarian of the Cleveland Library, Angela Puata, kindly providing us with a USB.

Elaine Speck, our Displays Coordinator and herself a long-time Cleveland resident, brought these materials to life for us with her accompanying commentary.

Leona Kyling was the granddaughter of pioneer settlers, John and Elizabeth Sherrin. She was a successful business woman in the Redlands, a poet, writer, dress-maker, designer, historian and sculptress who did extensive work for charities and donated land for community services. In 1950 she donated 22 acres of land at Thornlands for care of the elderly, raising money to build on it the village, first known as Lake Allawah Home for the Aged, then Lake Sherrin Home for the Aged, and now PresCare Lake Sherrin.

Leona Kyling was the original owner of land on the corner of Middle and Waterloo Streets, Cleveland, now an eatery precinct and known as Kyling Corner. She passed away in 1975.

Treasurer's Annual Report

Redland Genealogical Society a Branch of G.S.Q Inc.

Statement of Income & Expenditure for the year ending 30/04/2019

INCOME			EXPENDITURE		
Associate Memberships	3	\$2,220.00	Advertising	2	\$0.00
Bank Interest	4	\$51.02	Bank Fees	3	\$4.00
Capitation Fees	5	\$303.50	Float	4	\$0.00
Donations - attendances	6	\$820.00	Fundraising - Christmas Lunch	5	\$512.50
Donations - 50/50 scheme	7	\$0.00	Fundraising - raffles	6	\$150.00
Donations - library box	8	\$187.50	Fundraising - trips	7	\$0.00
Donations - other & Grants	9	\$145.00	Library Subscriptions	8	\$1,995.53
Library - members' purchases	10	\$89.80	Insurance	9	\$740.00
Library - Newsletter sales	11	\$0.00	Meeting Room Rental	10	\$605.00
Library - Starter Kit/Work Book sales	12	\$92.00	Newsletter - expenses	11	\$84.34
Fundraising - brick walls	13	\$0.00	Postage (incl. Newsletter)	12	\$108.00
Fundraising - bring and buy	14	\$9.00	Post Office Box Rental	13	\$130.00
Fundraising - Christmas Lunch	15	\$440.00	Purchases - books	14	\$192.93
Fundraising - raffles	16	\$312.50	Purchases - CDs	15	\$106.50
Fundraising - trips	17	\$14.00	Purchases - DVDs	16	\$0.00
Refunds	18	\$0.00	Purchases - fiche/USB	17	\$0.00
Sundries - float	19	\$0.00	Purchases - furniture	18	\$0.00
Members' badges	20	\$54.00	Purchases - lib. Equipment	19	\$296.73
			Purchases - Stationery	20	\$72.42
			Refunds	21	\$0.00
			Society Memberships	22	\$160.00
			State Govt. Fees	23	\$53.50
			Sundries - Administration	24	\$384.13
			Term Deposit	25	\$0.00
			Members' Badges	26	\$60.00
TOTALS		<u>\$4,738.32</u>	TOTALS		<u>\$5,655.58</u>
Opening Balance 1/5/2018		\$4,190.72	Closing balance 30/4/2019		\$3,273.46
		<u>\$8,929.04</u>			<u>\$8,929.04</u>

STATEMENT OF CURRENT ASSETS

Heritage Bank Limited - Club Cheque Account	\$3,273.46
Heritage Bank Limited - Club Term Deposit	\$7,000.00
Advances or floats held	Nil
There are no liabilities.	

The Association keeps financial records in a way which properly records the Association's income and expenditure and dealings with its assets.

Irene Salvatierra
Hon. Treasurer
Meeting date: 10 July, 2019



Librarian's Annual Report

Pat Misson

We are pleased to report that we continue to welcome a large number of people to our room. During the year, Cleveland Library was closed for a short time, as it underwent refurbishment and reorganisation, which had a small impact on attendance numbers. The number of people listed in the attendance book was 928 made up of 805 society members, and 123 visitors. This compares favourably with attendances at most genealogical research rooms.

Acquisitions for the twelve months to 30 June 2019 totalled 25, comprising 23 books, 1 CD and 1 microfiche.

We have again benefited from generous donations from our members and others. Of the listed items, 14 were donated and again, this year, we would like to record our thanks to those who have supplied such a wide range of resources. As in previous years, some donations have been from members of the public who do not belong to the Society. A complete list of this year's latest acquisitions is on the table for reference after the meeting.

As data in on-line genealogy databases continue to expand, we have taken up a subscription to FindMyPast, and renewed our subscriptions to TheGenealogist and Biographical Database of Australia. Combination of these sites with the Ancestry library site has greatly improved our on-line research capabilities. A folder has been placed on each computer desk to provide details of log-in and usage details of our three subscriptions, all of which are only available from our room. As new datasets are advised to us, the information is being placed in these desktop folders.

We have been grateful to receive the donation of a laptop computer. The unit has internet capacity, via Wi-Fi, which has enabled a connection to FindMyPast, and has removed the conflict at log-in with our subscription and that provided by Cleveland Library. A separate mouse was also supplied for the convenience of anyone unused to fingertip control pads. Our thanks go to Margaret Johnson for this donation, and for her work installing it.

The database of Members Interests has been altered to include the membership number of those who have submitted names. The full list of interests is included on the Society's web site and is also available to search on our No.2 PC in the library.

We continue to add to the range of online exchange magazines. These are accessible from an online folder on Nos. 2 & 3 PCs, providing the option for any notes of interest able to be printed from the printer attached to No.3.

Also, in the library is a new reference which provides contact details for family history societies and organisations world-wide. Greg Glidden has compiled two comprehensive lists, which includes web addresses and how to negotiate sites once accessed.

We have been fortunate to have our No.1 PC installed with an operating system that supports our IGI CDs. Our thanks go to Denis Hall for his work on this. Unfortunately, some of our vital records CDs could not be installed as before, and these have been re-assigned to a PC that they are compatible with. All folders and information pages have been updated.

During the year, Angela Puata was promoted to the position of Local Historian. A full-time assistant, Gillian McNeill has been appointed to the section, and can be referred to in Angela's absence. We would like to record our thanks for the constant assistance and support received from Angela and Gillian, in reference to our place within Redland Cleveland Library.

Finally, I would like to record my thanks for the constant work put in by all our Research Assistants, in providing their time, help and assistance to members and visitors. We are fortunate to have a full complement, ensuring the library functions to its full potential. The smooth running of the library is only achieved through the diligence of our GRAs. Special thanks to Jeanne Dixon for her professional input in library matters.

Beenleigh Historical Village and Museum

Annette Hall



"Rugged up and being briefed on our Tour"

Wednesday June 26th marks the day when seventeen intrepid members of our Society braved the savage elements, well maybe that's a bit much, and visited the Beenleigh Historical Village and Museum.

With billy tea and damper on the menu for morning tea nothing was going to stop us.

The staff were dressed in period costumes which I thought was for our benefit but maybe it was more to impress the 70 odd school children that arrived not long after we did.

There was a large range of buildings for us to explore. With our Guide leading the way, we visited Slab Huts to ordinary everyday homes to fancy houses of the day, a Rural School come Theatre, the Old Beenleigh Post Office, the Loganholme One Teacher School, the Coomera Lockup, small shops, a General Store now the lolly shop, Council Chambers and St George's Anglican Church, built 1875.

There were several sheds around the grounds housing Fire Engines, The Hester Dairy, a Woodcutter's Display Area, Machinery sheds, The Pimpama Dairy and a Blacksmith's shop.

A new display not yet open is "Friedensheim", meaning "House of Peace". This was the old sugar family 'Heck' homestead which was located in Mill Road, Woongoolba. It was built in 1914 for Wilhelm Heinrick and Ida HECK, the second generation of pioneers who came out from Germany in 1866. The house is in very good condition and will be a major asset for the Village.

Our day ended at the Old Beenleigh Railway Station, built in 1885, relocated to the village, and now the "Tin Cup Café", where we all enjoyed lunch before our trip home.

All in all, a very pleasant day was had with pleasant company, and despite rain and mud.

Our Treasurer, Irene, made an interesting "find" during the tour: **The Beenleigh Historic Village Card Index**. For those who are seeking information about families in the Logan district, a PDF can be downloaded from website - http://www.loganriverfamilyhistorysociety.com.au/3581028d6209/4xzc0_8w1_2h-23890180y8/19_8df/. The indexing is still a work in progress, but certainly it is worth a look. [Ed. RR]

Newsletter Editor's Annual Report

Greg Glidden

Throughout the year, Members, several from the Writing Interest Group, have continued to provide support by sending articles for publication. Their personal stories, and the items of genealogical interest that they bring to my attention, have provided a good stock of materials for me to draw upon to fill each quarterly edition of the *Redland Researcher*.

A group of Members shares the role of photographer, thus ensuring that at least one is present to record all Society activities. Photographs are an important inclusion in the newsletter.

Members' research interests continue to be published in the newsletter, as well as on our website, to provide a wide distribution of this information. I have continued to circulate the Members Interests form at regular intervals as a means of ensuring that their information is up to date. This provides the opportunity for members to advise any changes in research interests, including names, dates and places. Also, it provides another opportunity for new Members to submit their details if they have not already done so.

We have reciprocal arrangements with ten (10) family history societies, located throughout Australia and in England, for the exchange of each other's newsletters. The latest addition is the Logan River and District Family History Society.

As a fund-raiser, Business Card size advertisements will be accepted for placement in the newsletter. Pricing is reasonable, and advertisements are not limited to genealogical matters. To date, no advertisements have been placed.



Family Tree Maker User Group Convenor's Annual Report

Les McFadzen

Since the group was formed, we have had 85 meetings held at Alexandra Hills where I have set up a large screen TV as a computer monitor. The meetings are held on the third Wednesday each month beginning at 1300 hrs.

The Family Tree Maker programme owned by Mackiev.com, has been operating under Version 2017. Mackiev.com also produced the Apple Mac version of the programme

Mackiev.com have worked with Ancestry to make adjustments to FamilySync. They also provided a link to the LDS site, FamilySearch. In May this year they offered a reduced purchase to FTM users with a current registered programme, for a 2019 Version to be released in the Northern Hemisphere summer. One of the proposed changes to the new programme relates to the FTM programme being able to link to LDS trees in FamilySearch.

As we are a networking group, members bring along their own laptops and their specific problems for assistance from other group members. If required, step-by-step instruction sheets on specific functions are added to Dropbox and a link is emailed to group members following the meetings.

Membership Officer's Annual Report:

Annette Hall

Total Membership stands at 118 made up of 83 Redland Associate members and 35 GSQ/Redland Branch members. Unfortunately, this is considerably fewer than at the same time last year.

There are still a few members changing from one type of membership to the other as in previous years.



Facebook Co-ordinator's Annual Report

Yvonne Weston

Over the past year we have undertaken a program of posting event and information notices to keep our members informed of our activities. The other purpose of creating posts of this nature is to increase public awareness of our existence and what we can offer to assist people in starting and furthering their genealogy research. This strategy is working as our posts have reached the public and has encouraged visits to our library research room and guest attendances to hear our guest speakers from time to time.

It is noted that photos of our events and guest speakers do attract the majority of 'likes' but some posts, particularly if they are more conversational rather than straight information pieces, also seem to get more views. It is hard to quantify the benefits of using Facebook in this fashion but over time it is expected that awareness will increase and hopefully will encourage new memberships.

Writing Interest Group Convenor's Annual Report

Helen Veivers

The Writing Interest Group has continued to meet on the 4th Wednesday of March, May, July, September and November in the Meeting Room at the Cleveland Library commencing at 1.30pm. Attendance at meetings has been consistent with 8-10 people present at each meeting.

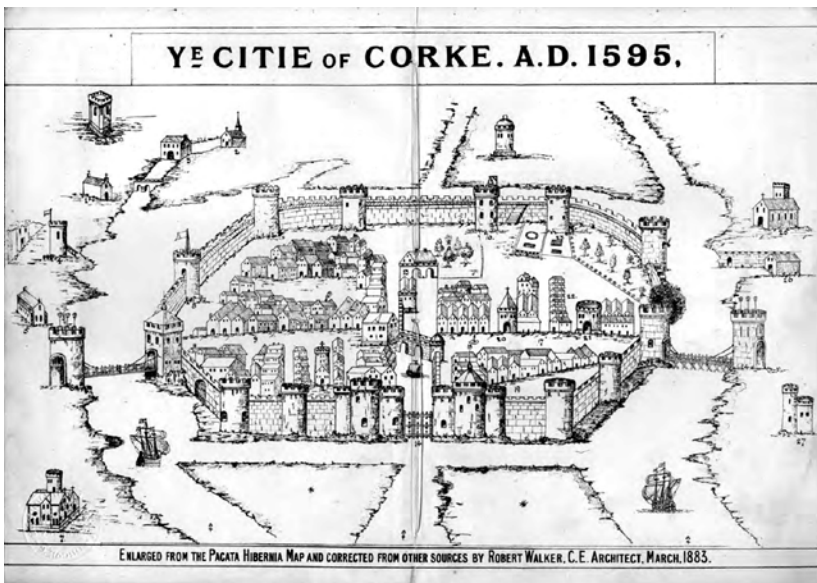
Meetings always start with an opportunity to write and include feedback to a writer who has emailed writing to group members since the last meeting. Members have produced writing of a very high standard and lots of interest is generated during the writing and feedback sessions. Some of our members' writing has been published in the *Redland Researcher*.

During the year the group has spent quite a deal of time learning the art of blogging, a very valid alternative to what one could term "ordinary writing". At our September meeting the Guest Speaker was Dr Leonie Ryder, who had recently authored and published a family history book. Our November meeting was spent examining the unusual way in which Leonie had structured this book.

Cork and Cobh

Dawn Montgomery

Cork is the third city in Ireland, after Dublin and Belfast. It is the second city of Eire and is one of the few places in Ireland where the population has recovered to be about the same as before the famine.



According to my grandfather's birth certificate, his mother Hannah Hely [since found to be aka Johanna Haley] came from Cork, so I had a special interest in the city when I visited Ireland some years ago. I liked Cork especially, though my friends said I was looking at it with a biased view! Many of Cork's streets used to be waterways and the streets are just built over the canals and streams. There are many interesting buildings – the Court House built on Grecian temple lines, as is St. Patrick's church near the railway; the University buildings; the interesting old houses; St. Finbarr's Cathedral; and then there is a very modern glass fronted opera house!

While at Cork we went to Cobh, which is pronounced Cove, and used to be called Queenstown. It is Cork's harbour and is regarded almost as a suburb of Cork. We were having a cuppa, escaping from the rain, and the young man who owned the coffee and cake shop started talking to us. When he discovered we were from Australia he said, "Well, if you are from Australia, you'll be interested in a little history of this place." Of course, we said yes.

He told us that Cobh was still called Queenstown until the 1930s. When Ireland became independent after 1921, Britain was still allowed to use Queenstown as its harbour. When it was finally handed back to Ireland, they changed the name. At the outbreak of World War II Britain wanted their harbour back, but the Irish said 'Stiff cheese' or whatever Irish say in such cases.



Queenstown was the main port of Ireland – not Dublin. He said 90% of all people, whether convict or free, would have left from Cobh (Queenstown) if they left from Ireland. In the harbour is Spike Island and there was a prison in it – rather like Pinchgut in Sydney, it seems, or St. Helena in Brisbane – and the convicts were brought there and put on it or in the hulks until there were enough to fill a ship. He pointed out to us the wharf where the ships left from. He was very eloquent, and you could just imagine them all, standing around crying because they expected never to see their homeland or their loved ones again.

Just up the hill from the wharf is a part of town called the Holy Ground – because it was just the opposite, he said – it was the red-light district of Ireland. Queenstown was a garrison town for a long time. Most of the ships which left from Portsmouth etc. in England also called at Cork. It was the last port of call for the *Titanic*, and the *Lusitania* wreck is just nearby at Kinsale. Now Cobh is a suburb of Cork almost, a pleasant seaside town, its main distinguishing feature its magnificent cathedral on the hill.

© Dawn Montgomery 2012

This article was first published in the "Queensland Family Historian" in October 1986 [Ed. RR]



Magazine Interest Group Convenor's Annual Report

Annette Hall

Twenty magazines from various Family History Societies worldwide have been circulated by our Group members over the past twelve months.

With 14 members in the Magazine Interest Group we cover a wide range of counties in England, two in Scotland three Australian states and New Zealand.

The majority of the magazines are eventually placed in the Library for all members of the Society to read or borrow.

The magazines are always full of interesting facts, hints and especially **SURNAMES** to help with your research.

Displays Co-ordinator's Annual Report

Elaine Speck

We have had a number of displays in the last Financial Year.

Our first Display for the year was at GSQ for their FAMILY HISTORY FAIR. This was quite a productive Day letting people know who and where we are.

Next was our big time for Seniors Week in August. This has been held in Coles Stockland for the last few years. It is a manned Display with 4 people rostered on in 2 shifts each day. This year we did quite well. Lots of interest but this has a lot to do with where we are placed in the centre.

The next ones were a group at AVEO Retirement villages. Cleveland Gardens on 11th September with not so much interest as last time. Smith Street on 18th September which was very well set up with Marquees with lots of interest and, then, Manly the next week. This one was indoors and not so productive.

We then were included with the Volunteers Expo at Alexandra Hills Hotel on Wednesday 5th December. Good day for anyone interested in becoming a volunteer for our Local Area.

The Museum had a HERITAGE and HARMONY Day on the 24th March this year. We took our life-sized models – the male dressed as a convict and our lady in Heritage Costume. We turned up with our Display Boards and Models and I think they were a bit thrown at first but very impressed with our setup. We did not have a lot of contact with the public as such as they had quite a bit of entertainment going on all day.

Last one for the year was another day at GSQ. It was a reasonable day and I do not feel that we intrude too much on their space.

Also, thanks to our willing helpers and especially Les, Kevin and Greg who between them do a great job in setting our Displays up wherever we venture.



Archivist's Annual Report

Janelle Everest

The Society's archive consists of text and image files in hard copy as well as some files that are stored in electronic format. Ephemeral items also make up a small part of the archive.

The archive is a record of the Society's endeavours. Photographs which have recorded events and activities throughout the year, including guest speakers at the general monthly meetings, have been added to the archive on an ongoing basis. At this point I would like to thank those who have taken on the task of recording these events and forwarding the images on so they can be added to the collection.

I would also like to thank members who provide text-based files ensuring that the archive is a complete record of the Society's activities.

Recreation in the 1950s

Audrey Warner

Recreation in the 1950s, I think, was a bit more physical than the recreation of today, and I would like to outline here some of the things that used to occupy my friends and me in those years.

There were lots of tennis courts dotted around Brisbane and I was playing tennis most weekends, although I was never terribly good at it. I had learnt at school and at weekends but was never in one of the tennis teams. The sport that took up most of my time though was skating. We skated on the rink at Burleigh, at the Blue Moon skating rink, and on a block of concrete (formerly the floor of an American army hut) in what is now the war service housing area at Moorooka. We had to walk through the bush to get to the rink to skate with the Brisbane Dance and Figure Club, usually on a Sunday. The Blue Moon rink at South Brisbane, where the Art Gallery now stands, was my favourite, especially after my Mum and Dad bought me a pair of white leather lace up skating boots. We either carried the skates on a steel hanger, or else tied the laces and wore them around our necks as we travelled to our destination. The metal floor of the Blue Moon was very noisy as people moved around it with different ranges of proficiency.

I spent my holidays at Burleigh where I stayed with my Aunt, and for a few years there was a skating rink right on the beach there. You can imagine how much fun it was rolling around on your skates beside the beautiful Pacific Ocean. Of course, being at Burleigh also meant that surfing was another pastime and also walking around Big Burleigh for a swim in Tallebudgera Creek where we would sometimes jump into the channel from the Bridge. I cut my hands badly on oyster shells once while trying to drag myself up the side of the bank after jumping from the bridge. One piece of oyster shell stayed in the palm of my hand for years. Maybe it is still floating around inside me somewhere. I can imagine what I would have said if I found our children doing the same thing!

Another pastime was going square dancing at Woolloongabba with friends. It was quite fun dressing in the flared skirts with their full starched, swirly petticoats. My Mum used to do most of my ironing, but she didn't appreciate having to iron the yards and yards of lawn in the petticoats she had starched, so that was one of the few chores I had to do myself.

One of the boys we played tennis with, Barry, did a lot of ballroom dancing and talked a friend, Rhonda, and I into going with him because he said it was much more of a challenge than square dancing. We went along with him to a place run by Aub and Dal Panton, situated at the top of Adelaide Street, and we were hooked. It was just a big room at the top of a flight of stairs, and "Pops" would be spread on the floor to make it easier to dance on. The people there were super and we made many friends. We learnt for a while and then became part of the teaching staff. People who wanted to learn would sit on benches at each side of the room and the staff would line up and take a student each to dance with and teach. There was also lots of practice and the occasional staff picnic. Rhonda and I danced at least three times a week and still went skating and played tennis, so we weren't home very often.

Actually, I'm very grateful to Barry as it was at Panton's Dance Studio that I met my future husband. The staff of the studio went on a boat cruise to Mandalay – a Dance Palais on the banks of the Brisbane River. I was thrilled when Les asked me to be his partner on the cruise. I didn't find out until years later that he only asked me because I was the closest girl – soooooo romantic!

We also went to dances at other venues around Brisbane, such as the Police Boys Club, Riverside Ballroom, the Blind Institute, the O'Connor Boathouse (right on the Brisbane river) and, of course, Cloudland. The Boys' Club was extremely popular for the dances that were held there, and teenagers went there from all over Brisbane, mostly travelling by tram, to enjoy themselves. It was quite a large hall and it was a wonder the floor survived the pounding it got, especially during the progressive dances like the Boston Twostep.

Cloudland was a magical place. Some nights there was just dancing, and sometimes there were balls. My friends and I would spend weeks preparing to go to a ball, working out what we would wear, who we would go with, and throwing out hints for our partner to buy us a corsage. I would wander through Gardams, Bayards, Finney Isles and McDonnell & East to find just the right material and then Mum and I (mostly Mum) would take big breaths, cut into the expensive (well for those days) material to make a long ball gown, hopefully resembling a dress that I had seen some actress wearing in a musical on the silver screen.

The bands really threw themselves into the music and there were times when everyone would stop dancing just to listen, particularly to a chap called Harry Lebler who played the drums. When you weren't dancing, you could go out



2nd from left the author of this article in front of Les who has now been her husband for more than 62 years

on the balcony and look out over Brisbane or into each other's eyes. **The** most romantic place! What a pity it's not there anymore. When there was a big crowd dancing, the sprung floor used to bounce up and down. At the balls there was always a break when everyone retired to a large supper room to partake of goodies. Sometimes there were so many people there that there had to be two or even three sittings. Of course, every time you went to Cloudland, you felt obliged to have your picture taken in the little booth there for that purpose.

I also played ping pong, skittles and still had time to do a lot of reading, and even go to work.

I'm so glad I had the chance to experience life before TV, computers and mobile phones.

Brick Walls - a problem-solving session

In June, a couple of our member "experts" (whom we are very fortunate to have in our Society) gave digitised presentations on methods and resources used to research three matters presented to them, that had proved unsolvable to three of our members. Following is an outline of their findings: -

Dave Lee had asked us to find his Samuel CONEY, who had been tried and convicted for stealing, and "was he transported to Australia?"

- 8th December 1839 he stole from 'Abraham Parry Cumberbatch' esquire, 3 live tame Partridges, and from 'Thomas Hall' 3 geese.
 - 30th December 1839 he was tried at Lewes Assizes for "Criminal Larceny".
 - 14th January 1840 he was transferred to Gosport, Hampshire and held on the "Hulk ship York".
- He appeared on the 1841 Census onboard the "York Convict Hulk" and remained there.
- 21st December 1843 he was granted a **FREE PARDON** which took effect as of the 1st January 1844.

Margaret Clark asked if we could uncover **why** her husband's brother had been named as 'Sir Herbert Roy Cooper' on his son's birth certificate, who had also been named 'Sir Herbert Roy Cooper'.

- Nothing was uncovered but Margaret was given some avenues to investigate.
- Her second request was to find her husband Morrie's great grandfather's birth – Herbert COOPER born 1874/1875 Northumberland or Durham.
- Unfortunately, no official birth was uncovered but once again Margaret was given some information to follow up on.

However - Margaret was presented with research on Morrie's great grandmother, Elizabeth Agnes Patterson, including Census and Parents' Marriages etc taking her back another generation.

Frances Cudmore asked us to find the parents of Michael James Hayes, born and died Tasmania, and also if he was a descendant of a Convict.

- A probable birth was found for Michael – as **Male HAYES** 10 October 1862, Port Sorell, Tasmania, along with two sisters – Parents: John HAYES and Ellen FLEMING.
- Frances was also given research found on Michael's children all born in Tasmania but died in Victoria.
- **Research showed NO connection to a convict for Michael James Hayes.**

A Mother's Wish

Yvonne Weston

It was not a secret that my mother-in-law had a daughter who died after 5 hours of life but the only thing we knew about her is that she was buried in the grounds of the Old Nambour Cemetery. Her name was Christine and she was never seen by, let alone held by her mother. Nor was she openly discussed within the family.

In those days, to not discuss the existence of the child was often seen as a coping technique and, hopefully, a way to prevent dwelling on one's sorrows. This was a harsh reality by our standards of mental health and maternity care. The parents never visited the grave, and that was something that broke Beryl's (my mother-in-law's) heart.

Something that Beryl always wanted was for Christine to be found and acknowledged - and that is just what we did!

Today little Christine has a headstone and has been identified as part of this family. Long overdue, I know, and we can feel comforted that we have honoured a mother's wish.



Members' Interests

Please contact Members through the Society's email: redlandgs@gmail.com

Member's Name: **Dave LEE**

Membership No: **317F**

Surname	Year/ Range of Years	Town/City	County/State	Country
Coney	1841>		TAS	AUS
Coney	1947>	Melbourne	VIC	AUS
Seal	1833		TAS	AUS
Seal	1833	Adelaide	SA	AUS
Seal	1852-1876	Geelong	VIC	AUS
Seal	1850-1876	Melbourne	VIC	AUS

Member's Name: **Rosemary (Penny) STEWART**

Membership No: **207**

Surname	Year/ Range of Years	Town/City	COUNTY/STATE	COUNTRY
Baker	1500-1800	Kirby-le-Soken	ESS	ENG
Boylett			SRY	ENG
Cameron	1700-1800		INV	SCT
Cameron	1800-1900	Melbourne	VIC	AUS
Carey	1600-1800			IRL
Clark	1500-1800		ESS	ENG
Cormac	1800-1950		TAMIL NADU	INDIA
Dashwood	1750-1950			
Hardaker	1700-1900	Rawdon	YKS	ENG
Kohlhoff	1400-1700		NEUWARP	GERMANY
Kohlhoff	1700-1950		TAMIL NADU	INDIA
Stevenson	1700-1900			INDIA
Stone	1500-1800		ESS	ENG
Tremenheere			CON	ENG

Member's Name: **Greta BROWN**

Membership No: **181**

Surname	Year/ Range of Years	Town/City	COUNTY/STATE	COUNTRY
McHugh	1880	Galway	GAL	IRL
McNamara	1900	Brisbane	QLD	AUS
McNara	1900	Wigan	LAN	ENG

RGS Logoed Shirts

Members who wear a logoed shirt to meetings often receive enquiries about our activities. This is an easy way to raise our profile and can result in the recruiting of a new member.

For those interested in wearing a shirt with the Society's logo, these are available from Complete Embroidery & Apparel, 4/45 Waterloo Street, Cleveland (Showground end of Waterloo Street, a block away from the Donald Simpson Centre); Phone number 3821 5777, Mobile 0408 180 131

Options are -

- select a blue shirt from their range (price includes embroidery)
Ladies' S/Sleeve \$39.50 - Ladies' 3/4 Sleeve \$40.00 - Ladies' L/Sleeve \$42.00
Men's S/Sleeve \$43.00 - Men's L/Sleeve \$46.00
- take your own garment - \$12.50 for embroidery
- Purchase an embroidered badge for you to sew onto your own garment - \$17.00 (approximate)

[Prices correct at time of going to print - Ed. RR]

Wandering Through the Web

Announcing the 1921 Census "findmypast"

<https://www.findmypast.co.uk/1921-census>

This census will be published online by findmypast in January 2022. It will be available only from them and only to subscribers. This site provides information about what you can expect to find in the 1921 census.

The 1921 Census

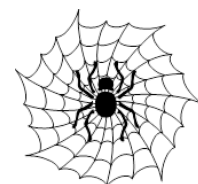
<http://www.1921census.org.uk/>

This site includes more information about the 1921 census, including what information was recorded, what alternatives are available while we wait, and provides links to other research sites that might be helpful.

Colourise your B&W Photos

<https://colourise.sg/>

Select "Learn more" for a fascinating read on the development of this app. Select "Try it yourself", load your B&W photo, then download the results.



Registry of Births, Deaths & Marriages (Qld)

<https://www.vision6.com.au/em/message/email/view?a=55580&id=1436877&k=rEwBO8fbJCBP2YgJx0KpfaStnH49Nzs9pxo8f003eFk>

Details of updates to the new Family history research service introduced in 2018



16 Corporate Drive, Cannon Hill

Phone: (07) 3249 4200

Website: www.naa.gov.au

Important: Before visiting, refer to "Step-by-step guide for researchers" in their website for requirements for ordering & accessing records and using Reading Room.

Hours & Facilities:

Open - Wednesday to Friday 9am to 4.30pm

Closed - Public Holidays

A public kitchen with tea and coffee facilities is located on the Ground Floor.

Free on-site parking is available.

The strengths of their Brisbane facility collection are the immigration records that date from the 1850s; the post office and mail service records, and photographs that are a rich source of information for local history.

Queensland State Archives

435 Compton Road, Runcorn

Phone: (07) 3131 7777

Website: www.archives.qld.gov.au

Important: Before visiting, refer to "Public Search Room" in their website for requirements for using the search room and for accessing records.

Hours & Facilities:

Open - Monday to Friday, 9am to 4.30pm

Closed - Public Holidays & Christmas/New Year period

Open - Second Saturday each month, 9am to 4.30pm

The Readers Lounge has tea & coffee facilities, a refrigerator and a microwave.

Free on-site parking is available.

Visit their website for details of a free taxi service from Fruitgrove Railway Station on Tuesdays.

The QSA holds informative Seminars and Events throughout the year, on their premises and at external venues. Check "What's on" in their website for details or to arrange subscription to their free "qsa bulletin".



Where to get your Certificates

Check the relevant Registrar's Office for more information

These prices are based on Historical Certificates, where available

Queensland

Registry of Births, Deaths & Marriages (Qld)
110 George Street, Brisbane. 4000
PO Box 15188, City East, Qld 4002
Phone: 1300 366 430
Hours: Monday-Friday 8.30am – 4.30pm
\$22.50 Historical Image – PDF on-line
\$22.50 Historical Source Image – PDF on-line
\$31.70 Historical Certificate – includes postage
<https://www.familyhistory.bdm.qld.gov.au/>

New South Wales

NSW Registry of Births, Deaths & Marriages
GPO Box 30, Sydney, NSW 2001
Phone: 13 77 88
\$35.00 (with Registration number)
\$48.00 (w/out number, includes 10-year search)
Both include postage; Credit card charges extra
www.bdm.nsw.gov.au

Transcription services:

www.joymurrin.com.au
<http://www.transcriptions.com.au/>



Victoria

Registry of Births, Deaths & Marriages
GPO Box 5220, Melbourne, Vic 3001
Phone: 1300 369 367
\$24.50 Uncertified Historical Image - via email
\$33.80 Historical Certificate – postage extra
www.bdm.vic.gov.au

Australian Capital Territory

(Pre 1930, apply to NSW)
Registry of Births, Deaths & Marriages
GPO Box 158, Canberra City, ACT 2601
Phone: (02) 6207 3000
\$65.00 includes postage
Historic Death and Marriage Indexes are now available.
https://www.accesscanberra.act.gov.au/app/answers/detail/a_id/18/kw/bdm

South Australia

Births, Deaths & Marriages
Consumer & Business Services
GPO Box 1351, Adelaide, SA 5001
Phone: 131 882
\$54.50 - includes postage
<https://www.sa.gov.au/topics/family-and-community/births-deaths-and-marriages>

Western Australia

Registry of Births, Deaths & Marriages
PO Box 7720, Cloisters Square, Perth, WA 6850
Phone: 1300 305 021
\$20.00 (uncertified copy) – includes postage
<https://bdm.justice.wa.gov.au/>

Tasmania

Registry of Births, Deaths & Marriages
GPO Box 198, Hobart, Tasmania 7001
Phone: 1300 135 513
\$55.42 – includes postage
www.justice.tas.gov.au/bdm/home

Northern Territory

Registry of Births, Deaths & Marriages
GPO Box 3021, Darwin, NT 0801
Phone: (08) 8999 6119
\$47.00 – postage extra
(1856-1863 = NSW) (1863-1870 = SA)
www.nt.gov.au/justice/bdm

New Zealand

Registry of Births, Deaths, Marriages & Citizenship
PO Box 10-526, Wellington 6143 New Zealand
Printout **\$(NZ)25.00**
(Visa, MasterCard & American Express accepted)
A printout has more information than a certificate
www.bdmhistoricalrecords.dia.govt.nz/Home/



Queensland Family History Society Inc.

58-60 Bellevue Avenue, GAYTHORNE 4051

Phone: **(07) 3355 3369**

Email: secretary@qfhs.org.au

Website: www.qfhs.org.au

There are no stairs at this venue. It is accessible by either train or bus. Parking is available in the street.

Members are reminded that RGS is an Associate Member of QFHS.

Membership cards are available from our RGS Secretary for a borrowing fee of \$2. QFHS will charge an Hourly or a Day fee, if you do not take this card with you.

If registering online for seminars, the card is not needed. Our QFHS Membership number, obtainable from RGS Secretary, must be stated.

Disclaimer

The above information is correct at the time of going to print. Use this only as a guide. Check websites for full details. Prices are subject to change. If you do find incorrect information, I will appreciate your advising me.

[Ed. RR]

Genealogical Society of Queensland Inc.

25 Stackpole St (cnr Mt Gravatt-Capalaba Rd)

WISHART 4122

Phone: **(07) 3349 6072**

Email: info@gsq.org.au

Website: www.gsq.org.au

Opening hours: -

Mondays & Public Holidays..... Closed

Tuesdays to Fridays..... 10am to 3pm

2nd & 4th Wednesdays..... 6pm to 9pm

Saturdays..... 12noon to 4pm

Sundays Interest Group

Meetings only.