

Redland Researcher



proudly supported by Redland City Council

*The newsletter of
Redland Genealogical Society Inc.*

Issue No. 154

Feb 2025

Redland Genealogical Society Inc.

PO Box 605, Cleveland Qld 4163

Email: redlandgs@gmail.comWebsite: www.rgs.net.au

Patron: Les McFadzen

Management Committee 2024/2025

President	Helen Veivers
Vice President	Kevin Hughes
Secretary	Dianne Smith
Treasurer	Yvonne Weston
Assistant Treasurer	Val Burt
Librarian	Karen Hawkes
Membership Officers	Russell and Jean Clarke
Displays Co-ordinator	Elaine Speck
Website Co-ordinator	Kevin Hughes
Archivist	Janelle Everest
Newsletter Editor	Pat McCallum
Committee Member 1	Lyn Smyth
Committee Member 2	Greg Glidden

Special Interest & Other Groups

DNA Interest Group Convenor	Kevin Hughes
Facebook Co-ordinator	Yvonne Weston
Magazine Interest Group Convenor	Annette Hall
Writing Interest Group Convenor	Helen Veivers
Zoom Group Convenor	

Life Members

2010 Denise Brady & Marel Donaldson - Foundation Members
Kaye Barber, Pamela Gilbert, Elaine Speck
2013 Les McFadzen

Past Life Members

2010 Glenda Webb, **2011** Les Callaghan,
2016 Jeanne Dixon, **2019** Pat Misson

General Meetings are held **on the second Wednesday of the month**, February to December, **12:15pm to 2:30pm**, at Donald Simpson Centre, 172 Bloomfield Street, Cleveland. An entry fee of \$2 applies to cover the room booking (and a lucky door prize ticket). Free parking is available at the Centre. Meals can be purchased from the Centre's café by those wishing to have an early lunch prior to the meeting.

The Annual General Meeting is held on the second Wednesday of July at 12:15pm, followed by a General Meeting.

The Management Committee meets on the first Wednesday of the month, February to December, at 2pm.

Meetings are not held during January.

The RGS Collections contain a range of resources **for world-wide genealogical research** in various formats. These are held in our Genealogy "Genie" Room in the Council's Cleveland Library, Middle St (opp. Bloomfield St), Cleveland.

RGS members can use the RGS Library and its facilities, including accessing available online research organisations, at any time the Cleveland Library is open. **To obtain the Genie Room key**, members must present their **RGS** Redland City Council's Libraries Service card to the Cleveland Library Reception staff. It is not the same card that you use for borrowing privately from the Council's Libraries. It is the card given to all joining members. You must activate this card at Cleveland Library each time you renew RGS membership by presenting it with your latest RGS Membership Card.

Genealogical Research Assistants (GRAs) are in the room **to assist RGS Members and the General Public**

Tuesdays & Thursdays 9.30am to 12.30pm - Saturdays 12:30pm to 3:30pm

Volunteer GRAs: Karen Hawkes (Librarian), Bob Aldred, Ian Barrett, Val Burt, Margaret Clark, Russell Clarke, Annette Hall, Megan James, Bev McFadyen, Sandra Pawluk, Eddie Richards, Dianne Smith, Helen Veivers, Audrey Warner & Robyn Waters.

Redland City Council's Local History Collection: The Local History Collection is housed in the Cleveland Library with much of it available online at <https://rcc.spydus.com/cgi-bin/spydus.exe/MSGTRN/OPAC/HOME>. Georgia Bennett is Redland City Council's Local History Advisor; Gillian McNeill is Local History Technician.

A Note from the Editor

Pat McCallum

In the role of Newsletter Editor, I would like to briefly recognise the passing of life member, Jeanne Dixon, amongst her many contributions, spent a significant time as editor of the Redland Researcher. Those of us who have taken on that role subsequent to Jeanne's service understand the commitment that this takes. We can only hope that our efforts have lived up to the standard that Jeanne set so many years ago, often while serving in other roles at the same time. Genealogy is a cumulative enterprise. Whatever we achieve is built on the work of those who came before us and took an interest in the things that interest us. Isaac Newton is famous for saying:

"If I have seen further, it is by standing on the shoulders of giants."

Contents	Page
Management Committee ~ SIG Convenors ~ Meeting Times ~ Resources in the Genie Room & Access to it	2
Genealogical Research Assistants & Hours of Duty ~ Redland City Council's Local History Collection	2
A Note from the Editor ~ Contents ~ Copyright ~ Membership Fees and Payment Methods ~ Disclaimer	3
Society Updates – Monthly Meetings, Memberships, Facebook	4
Society Updates – Tributes for Jeanne Dixon	5
RGS Christmas Lunch 2025	6
From the Genie Room: – Notes from the Librarian	7
The Goddard's and their Manor House at Clyffe Pypard, Wiltshire, England	8
The Remarkable Life of George Fishburn, (1832-1913)	9
Treasure TROVE: – Centenary of Redlands RSL	13
Forthcoming Events: – Connections 2025 Conference – LAST CHANCE	14
Wandering through the Web: – Qld State Archives, handwriting; BlueSky the Twitter alternative	14
Wandering through the Web: – Rare Resource on Pioneer Women in Victoria	15
Where to Get Your Certificates	16

Membership Fees & Payment

Single Membership \$35.00 per annum - Family Membership \$50.00 per annum

Membership fees & Membership Renewal fees can be paid by Cash, Cheque or Electronically at General Meetings, or by Cash or Cheque to a GRA in the Genealogy Room. Alternatively, fees can be Transferred Electronically to the Society's bank account, Bank of Queensland Cleveland, BSB: 124-025 Account Number: 2349 3170.

When paying by Electronic Transfer it is very important that:

New members include the word '**New**' and '**Surname**' in the 'Payment Reference'!

Renewing members include '**Membership number**' and '**Surname**' in the 'Payment Reference' and also email or hand in a completed Membership Renewal form to the Membership Officer!

Application for Membership forms are available on the website, at General Meetings, and in the Genealogy Room.

Membership Renewal forms are emailed to members prior to their membership expiry date.

Redland Researcher is free to Members. It is emailed unless otherwise arranged.

Disclaimer

The opinions expressed in Redland Researcher are not necessarily those of the Management Committee, nor of Redland Genealogical Society Inc. The responsibility rests with the authors of submitted articles; we do not intentionally print inaccurate information. The Editor reserves the right to edit, abridge or reject material.

Copyright

Articles published in *Redland Researcher* are copyright to the Society and the authors. While articles may be copied for personal use, they may not be reproduced without the written permission of the Society and the Author.

Requests to reprint articles should be directed to redlandgs@gmail.com.



Society Updates

Monthly Meetings

In October we were treated to an extremely interesting presentation by Col Sutcliffe, with his topic "Hellfire Pass on the Burma-Thai Railway". This was a quality presentation informed by Col's firsthand experience from having visited the many locations and recounting the stories of persons he had actually met. Col's presentation resulted in a good deal of discussion during the presentation and after he had finished when he generously stayed around to discuss individual questions with members. Col also had several books for us to look at concerning this topic.



In December 2024, we were pre-occupied with our annual Christmas party. Which again was a resounding success, and a positive contribution to the Society and its resources.

The Society would welcome suggestions from members for topics and presenters of interest during 2025. Please discuss this amongst yourselves and make suggestions to any of the Management Committee members.

Memberships

Russell and Jean Clarke

With new members and departing members, membership continues to hold in the low 120's. At the moment with the sad passing of life member Jeanne Dixon the Society's membership at the time of this Newsletter is 122.

Another former member of the Society, Alice Wilkie has also passed away. And finally, to gather all the sad news Ray Misson, husband of late member, Pat Misson, also passed away recently.

Facebook

Yvonne Weston

Facebook is an important way the Society engages with its members and the broader community. We made quite a few posts reaching 2,400 people in December which is not surprising considering the focus for everyone is the holiday festivities and school holidays. I did however post quite a few seasonal (Christmas, New Year) focused posts to keep us in the local hearts and minds.

The biggest views for posts were:

- 9th December, 3,136:
- Christmas Eve post, 1,266:
- 6th January, 3,136.
- 19th January, 5,389:
- 27th January, 5,111.

I am yet to share the post from 31st January and will be watching to see how far that one goes as I am sharing to local groups the next day.

Facebook is now reporting view and reach separately so the figures can be a bit confusing to follow but nevertheless, it shows we are becoming more popular. Hope it keeps up this trend.

The site reached 6,198 people in January, with a total of 15,760 views, so some are revisiting our page – a great start to the year. The highest number of visits to our page was on 28th January, not sure why but possibly because of the Monday Murmurings posting the previous day which was viewed 5,111 times. I also noticed a few non-members commenting on the posts, which is also great to see. **Monday Murmurings** continues to be our most popular posting.

A quick reminder that **RGS Members Chat** is quite active, and we would love to welcome more RGS members to join. It is a 'members only' resource open to all members and is a great space for sharing hints, tips and ask questions. If you wish to join the chat group, there is now a link to it on the Facebook page in the 'about us' section, simply find our group and request to join, remembering to answer the security questions so that I can verify that you are a member of RGS and then can approve your request.

Tributes for Jeanne Dixon

Helen Veivers, President

Jeanne was a much valued and loved member of the Redland Genealogical Society and performed many roles during her membership of the Society. She joined the Society in May 1998, some twenty-six years ago.

Jeanne called on her past skills in the workforce when she became the Librarian in April 2002. She just loved the work in the Library and set up many of the practices still used now. Under her stewardship, the Library developed into the useful facility it is today. Jeanne remained as the Librarian until sometime after the 2006 Annual General Meeting when she left to care for her husband who was very ill. (Pat Misson then took over the Library's reins.)

In 2007 Jeanne stepped up and served as Secretary for a year. In 2009, she took on the role of co-editor for the Society's Newsletter "The Redland Researcher" with Pam Gilbert, a role she continued until 2013. Jeanne and Pam worked on a booklet, celebrating the 30th anniversary of the Society in 2011. This was a wonderful production. During this period she was also Co-convenor of the Magazine Interest Group with Pat Misson.

Jeanne returned to the job she really loved, the Librarian, in 2014. She was elected as a General Member of the Management Committee at the 2016 Annual General Meeting, a position she continued to hold until the past couple of years. When the Society's current Librarian was appointed in 2022, it was Jeanne who offered to guide her to help her develop the skills required.

A little aside about Jeanne - within the past couple of years Jeanne's curiosity was "sparked" when "The Genealogist" released maps of the area in which she'd grown up in England. She and I "went into" The Genealogist one day and homed in on the area of England in which Jeanne spent her early life. She was absolutely delighted to see on the screen in front of her, her very own house and its backyard - she told me how she and her friend used to sneak through the hedge to explore what was beyond. Her face beamed as she told me this.

Jeanne was awarded Life Membership of the Redland Genealogical Society on 13 July 2016 "having provided outstanding service to our Society and to Genealogy in Queensland for a period of 16 years."

What a wonderful record of service.

Vale, Jeanne.

Jeanne DIXON – 2016 RGS Life Member

Annette Hall

After Jeanne retired from her working life in 1997, she joined the Genealogical Society of Queensland on the 19th May, 1998 and became a Redland Branch member later changing to a direct membership with the Redland Genealogical Society in May of 2009.

Jeanne had dabbled in Family Research and wanted to investigate further, or as we say, "put meat on the bones".

She was a diligent researcher not just with her own Research. She also helped other RGS members and members of the public as a Genealogical Research Assistant in our Research room at the Cleveland Library up until late last year.

She was the society's Librarian on several occasions and held other positions on the Committee. She was also a great mentor for our current Librarian, Karen.

From an article she wrote for our Society's 40th Anniversary in 2021 she mentions: "While attending a wedding in the Ann St Presbyterian Church in Brisbane she discovered a memorial plaque for a Rev. Ernest Northcroft Merrington." It transpired he was Jeanne's 1st cousin once removed. Merrington being her maiden surname she quickly set about researching this Australian family line.

Another genealogical saying we have about researching is "grilling granny".

With any luck she will now have a chance to ask all those unanswered questions.

Jeanne will be missed but always remembered by all at RGS and our thoughts go to her surviving family.



Jeanne Dixon
40th Anniversary Booklet 2011

RGS Christmas 2025



CHRISTMAS RAFFLE:

- Hamper #1 Annette Hall Ticket: Blue B075
- Hamper #2 Karen Hawkes Ticket: Blue B087
- Hamper #3 Mary Hansen Ticket: Pink Y90
- Christmas Cake Audrey Warner Ticket: Pink Y72
- Bottle of Scotch Helen Veivers Ticket: Yellow D058
- Cake & Pudding Lyn Smythe Ticket: Pink Y62
- Bottle of Rum Val Burt Ticket: Blue B040
- Bottle of Wine Bob Aldred Ticket: Blue B056

A big shout out to the members who contributed raffle and Secret Santa items, and planned and helped set up on the day. Also thanks to the staff of the Donald Simpson Centre for their attendance to our needs on the day and for catering the event.

`Twas the night before Christmas, and down at the archive,

All the genealogists were feeling alive.

With charts and with records spread out on the floor,

In hopes that Saint Nicholas would bring them some more.

Grandma's old stories were shared by the tree,

While children sat listening with glee on their knee.

Ancestors' tales filled the room with delight,

As visions of great-grandpas danced in the night.

*The census and birth dates, the marriage certificates,
All piled high like genealogical gifts.*

*With stockings stuffed full of old family photos,
And a DNA kit for any new info.*

So here's to the sleuths tracing lines of their kin,

May your holiday season be merry within.

For genealogists know that our histories blend,

Making Christmas traditions a joy without end.

A Genealogist's Christmas, AI+ Yvonne



From the Genie Room

"Where RGS lives"

Karen Hawkes, Librarian

Hello everyone and, Welcome to 2025! I hope all have had a relaxing break and are now eager to return to our Genie Room for Researching and to Borrow a Book or Magazine.

Our Society subscribes to the following sites, all freely accessible in our Genie Room.

- FindMyPast
- Biographical Database of Australia
- RootsIreland
- The Genealogist

The Redland Library subscribes to Ancestry and FindMyPast including the 1921 UK Census, these can be accessed on the Library Computers in our Genie Room.

We also subscribe to Family Tree UK, Who Do You Think You Are? UK and Irish Roots Magazines. The latest copy of each can be viewed in the Genie Room and previous copies can be borrowed. Some Magazines and Journals have been culled over the holidays from the Genie Room shelves and will be placed on the back table at the February General Meeting for Members to take.

REMINDERS-

- To sign the Attendance Book when visiting our Genie Room.
- To fill out the Borrowing Book when borrowing Books, Magazines and CD'S.
- BORROWING from our Collection is available to RGS MEMBERS ONLY not Visitors to our Genie Room.
- Our Complete Library Catalogue can be viewed on Computer 3 in our Genie Room, on our Website and on The Redland Library Website.
- GRA Duty Days are Tuesday and Thursday 9.30am – 12.30pm and Saturday 12.30pm – 3.30pm. If you are unable to attend on any of these days to do Research, as a Member you are able to access our Genie Room by Borrowing the Genie Room Key when the Library is open.
- Computer 1 is now working again as the new Power Pack has been installed.

We start the year with 15 GRAs including our newest GRA - Megan James. Please make Megan welcome when visiting our Genie Room. I would like to thank all continuing GRAs for offering up their time and knowledge and also thank Irene Salvatierra who has resigned as a GRA. I would like to express my deep appreciation and respect to Jeanne Dixon for all that she has done for the Society, the GRA Team and myself. She was an Awesome Lady and a Great Mentor. She will be sadly missed.

I ask all members to please consider joining the GRA Team as I have plenty of days available – Tuesday, Thursday and Saturdays. The next GRA Meeting will be Monday 24th March at 10am in the Cleveland Library – All Members are Welcome.

Last year we welcomed 884 Members and Visitors to our Genie Room – hopefully this year we can reach 1,000 visits. Looking forward to seeing all Members in our Genie Room in 2025.

The Goddard's and their Manor House at Clyffe Pypard, Wiltshire, England

Malcolm Goddard



The Manor House at Clyffe Pypard sits on the edge of this charming Wiltshire village, with sweeping views of the beautiful countryside. The village itself nestles below a wooded hill called Clyffe Hanging and is home to St. Peter's Church, which dates back to the 13th century, with the nave added in the 15th century. It's a peaceful spot, but Marlborough is just 9 miles to the southeast, and Swindon, with its regular trains to London Paddington, is about 8 miles north.

The Manor House is a stunning Grade II listed building, full of character with its brick and stone construction and slate roof. Built around 1840 and remodelled in the 1880s, it's an impressive family home with far-reaching views of the surrounding countryside.

Inside, the entrance hall sets the tone with its wood panelling, and from there, you enter the large, well-proportioned reception rooms: a drawing room complete with fireplace and wood-burning stove, a dining room, a study, and even a billiards room. The dining room and billiards room both lead into an inner hallway, which takes you to the kitchen and breakfast room, where you can look out over the gardens. There's also a larder, boot room, and a large wine cellar downstairs.

A sweeping staircase leads to the upper floors, which house nine bedrooms and two bathrooms. The master bedroom, with its built-in wardrobes, offers gorgeous views over the garden and beyond. Outside, the property has space for numerous vehicles, including a four-bay carport in the old Coach House. The grounds themselves cover about 11 acres, with lawns, pathways, mature trees, and plenty of spots to enjoy the stunning views.

The Manor House has deep roots in the area. In 1530 William Dauntsey, Master of the Worshipful Company of Mercers, and an alderman of the City of London, the youngest son of John Dautesey of West Lavington in Wiltshire, sold the manor to John Goddard of Aldbourne (d. 1542), who was succeeded by his son John Goddard the younger.

From this time, the Goddard family owned both the manor and the rights to the local parish church, St. Peter's, for over four centuries, starting from the time of King Henry VIII. Before that, from 1421 until the Dissolution of the Monasteries, the Abbess of Lacock presented the vicars of St. Peter's. After Lacock Abbey was dissolved, John Goddard bought the manor in 1530 and passed it to his son Thomas in 1541, however the Goddard family's connection to the church didn't officially begin until around 1660.

Over the years, the manor passed through generations of the Goddard family, starting with John Goddard in 1530 and continuing through his descendants. The last of the Goddards to live at the manor was Frances, daughter of Horatio Nelson Goddard. She was married to Vice Admiral William Wilson, RN, and when she passed away in 1940, her son Capt. William Werden Wilson RN inherited the estate. It then passed to his son, Peter Werden Wilson, who held the manor in 1968.

The manor house was last offered for sale in September 2024 for the bargain basement price of £2,000,000.

References:

A History of the County of Wiltshire - www.british-history.ac.uk

The National Gazetteer of Great Britain and Ireland (1868)

The Goddard family – Wikipedia - wikipedia.org/wiki/Goddard_family

The Remarkable Life of George Fishburn, (1832 - 1913)

From Coal Mines to Railways, Community Builder, and Benefactor.

Pat McCallum

George Fishburn was born on April 23, 1832, into a coal mining family in County Durham, England. His early years were spent in the grim realities of the Victorian mining industry, where children as young as five toiled in dangerous conditions. Like many boys of his era, George began his working life underground, labouring as a "trapper" in the coal mines at the age of nine.

While their labour was exploited for profit and their welfare disregarded, children were often pressed into mine work by their families to supplement the meagre income the family had to live on. Some official relief came with *The Mines and Collieries Act* of 1842, which prohibited women and girls from working underground in coal mines, where it also set a minimum age of ten for boys working underground. There was no rosy future envisaged for young George Fishburn. It was an unrelenting life, one spent in near-total darkness, with little hope of escape from the generational cycle of hardship.



Trapper at work in coal mine 19th Century England



Long Row, Coxhoe, Co. Durham

In 1841, George was ten years old. His family lived in the "Joint Stock Colliery" houses called the Long Row in the village of Coxhoe. George's working life consisted of 12-hours a day, six days a week, sitting in the dark in a nook by a trap door deep in the mine and listening out for other children pulling ('hurriers') and/or pushing ('thrusters') heavy corves (wheeled buckets) of coal and opening the trap door for the corf to pass. A trapper working the day shift would not see the sunlight until Sunday came around. There was no opportunity or thought to their education or religious instruction. It was thought ironical at the time, that trapping was entrusted to the youngest and least experienced workers. The trap doors were a critical component of the primitive ventilation systems in the mines, a failure of which could have catastrophic consequences for both the miners and the mine.

The English poet, Elizabeth Barrett Browning was born at Coxhoe Hall, and lived there as a child, close to where the Long Row miners' accommodation would be built. It was the grim firsthand reports from children to the 1842 Commission of Inquiry which had provoked the *Mines Act* but also had inspired Elizabeth Barrett Browning's poem *The Cry of the Children*. The poem derives its force by giving a voice to the children in the face of the hollow platitudes, thoughts, and prayers of civilized society.

*Leave us quiet in the dark of the coal-shadows,
From your pleasures fair and fine!*

*"For oh," say the children, "we are weary,
And we cannot run or leap —
If we cared for any meadows, it were merely
To drop down in them and sleep.
Our knees tremble sorely in the stooping —
We fall upon our faces, trying to go;
And, underneath our heavy eyelids drooping,
The reddest flower would look as pale as snow.
For, all day, we drag our burden tiring,
Through the coal-dark, underground*

from - *The Cry of the Children*
Elizabeth Barrett Browning (1843).

In the 1851 census, George was recorded as a coal miner specifically a “Pitman”. By 1854, George had married Jane Race, a young woman from a fellow mining family. Seeking a brighter future, George and Jane made the courageous decision to get away from the oppressive environment of underground mines and emigrate to Australia. On January 19, 1855, at the age of 21, George and Jane (aged just 19) arrived in Brisbane on the ship *William Miles*, with their infant daughter, Margaret. George, with 10 years of gruelling labour behind him, had little formal education, but he possessed an indomitable spirit and keen business acumen.

The Fishburn family soon moved to Ballarat, Victoria, where George saw opportunity, not in the gold rush itself but in the construction boom that followed. With grit and determination, George built a successful civil contracting business, establishing himself as a respected railway contractor and civil engineer. Although not formally educated, George began a lifelong process of using his natural ability and shrewd eye for business, he no doubt did things a little differently to better educated men, but no less effectively.

During the 1850s and 1860s the Victorian government had undertaken a number of ‘gold plated’, railway construction projects, the first, major works on the railway network in Victoria. By the end of this period, due to ‘budget fatigue’ there was little appetite for further expensive projects. However, the demand to extend the network only increased. This delivered an opportunity for George and his associates to take on four major railway construction projects during what was called the ‘trunk lines and light lines era’ in Victoria. By the 1870s, George had firmly established himself as a successful railway contractor.

- 1874 Maryborough, VIC to Clunes.
- 1875-76 Beechworth Branch Railway.
- 1877-78 Gippsland Railway section.
- 1878 Wahgunyah Branch Railway.

Undertaking such projects successfully not only involves sound engineering skills but also effective project management skills. That George demonstrated these, is reflected in his success in moving on to four more projects in New South Wales.

- 1879-81 Junee and Nerrandera railway.
- 1881-84 Wallerawang and Mudgee Railway.
- 1884-86 Murrumburrah and Blayney railway.
- 1885-86 Young to Cowra.

The sequence of projects is eye catching to the modern eye. In such large projects involving extensive work forces and expensive equipment, being able to undertake projects end-on-end is a positive in maintaining momentum, keeping key staff, and re-using equipment without significant stand downs and remobilisation costs.

Working in regional areas was not without incident. George had a brush with infamy. His actions during the Wantabadgery Station hold-up, where four policemen were up against six bushrangers including the infamous bushranger Captain Moonlight, were widely commended after he helped alert the police at Wagga Wagga and two of his team assisted in the defence as well. This action earned him recognition from Sir Henry Parkes (Premier of New South Wales) himself, who gifted George an engraved pistol in gratitude for his bravery.

His involvement in major railway construction projects across Victoria and New South Wales played a significant role in expanding the railway network during a time of critical growth in Australia's transportation infrastructure. Between 1874 and 1886, George and his team completed projects that linked towns and communities across vast distances, from Maryborough to Clunes, and Junee to Nerrandera. These railways were crucial in opening up regional areas to commerce and trade, creating lifelines for the communities they served. Yet, George was not content with merely building railways. He understood that these projects were more than just construction—they were the veins through which the lifeblood of growing towns flowed. His involvement in local communities went beyond the worksite—his works built more than railways; they built connections between people.

George's life was one of remarkable achievements, not only in building infrastructure but also in enriching the communities he worked in. He was a man ahead of his time, who understood the importance of working alongside local stakeholders and giving back to society. He organized local celebrations, raised funds for hospitals, and fostered

goodwill wherever he worked. These were no stuffy society galas but genuinely fun and inclusive events. This is clearly demonstrated in reports from Cowra, where he organised an event for the opening of the line.

COWRA. — The demonstration in Cowra on Monday in aid of the funds of the Young and Cowra hospitals was a great success. Not less than 700 people went from Young and district by train which passed under a triumphal arch, upon which the word 'welcome' was conspicuously shown in large characters. Hearty cheers greeted the visitors on alighting. A flattering address was presented to Mr. George Fishburn by the hospital committees and Cowra Lodge of Oddfellows, M.U. The sports took place on the show ground, at which not less than 4000 persons were present. It is believed that with the handsome donation of £150 to the funds, the receipts will exceed £500.

A man of broad vision, George's ventures extended beyond construction and railways. In the 1880s, when the people of Moruya in New South Wales were suffering under a shipping monopoly, George saw an opportunity to make a difference. He purchased a ship, *The Trident*, offering shares to the locals, to compete against the existing service and established a locally owned shipping service, breaking the monopoly and providing fair competition for the community. This business initiative, like so many of his endeavours, was not driven solely by profit but by a genuine desire to improve the livelihoods of those around him.

In 1887, George and his partners put in a tender to build the New South Wales State House which included a design competition. It was reported that George's lowest tender was already in the hands of Sir Henry Parkes. George was perhaps not welcome into this prestigious competition and his credentials were the subject of undermining in the press. While George's firm did not appear to have eventually won the contract, the 'white anting' missed its mark. At the time George and the firm he was in, Phippard Bros & Co., had commenced building the first phase of the Queensland Treasury Building. They had also constructed a portion of the Eveleigh Railway Workshops in Redfern, which is now on the NSW State Heritage Register and states, "The major buildings from the original 19th century development of the site are well designed, detailed and built exhibiting a high degree of unity of design, detailing and material". As a construction manager, he had clearly demonstrated an ability to undertake major projects.



Queensland Treasury Building 1890s (SLQ)



Dayton Money-Weight Scale, 1915 (Scale Journal)

In his later years, George found new ways to continue his lifelong interest in innovation and business. His role as the Australasian agent for the Dayton Money-Weight Scale, a mechanical device that simplified commercial transactions, was a fitting culmination of his entrepreneurial spirit. The Dayton Scale was a precursor to mechanical computing, and George's involvement in promoting it hinted at his foresight into the importance of technology in shaping the future.

The scale stood at the point of sale between the merchant and the customer. It added to the efficiency and transparency of the transaction by allowing the merchant to simply weigh an item and read the price off the machine. The customer had the opportunity to quickly build trust in the process as an alternative to pencil and paper calculations behind the counter. The manufacturer of the Dayton

Money-Weight Scale was the Computer Scale Company of Dayton Ohio and was one of three companies which were merged to take advantage of mechanical computing inventions and to form what would become IBM.

Despite his busy professional life, George maintained a passion for handball, a sport he played competitively while living in Melbourne as a young man and continued playing into his later years. His active lifestyle, despite his gruelling early years in the coal mines and the physical demands of railway construction, spoke to his remarkable vitality and resilience.

Throughout his life, George never forgot the importance of family and community. His diverse business ventures often involved roles for his extended family. Despite the hardships of his early years in the coal mines of Durham, George

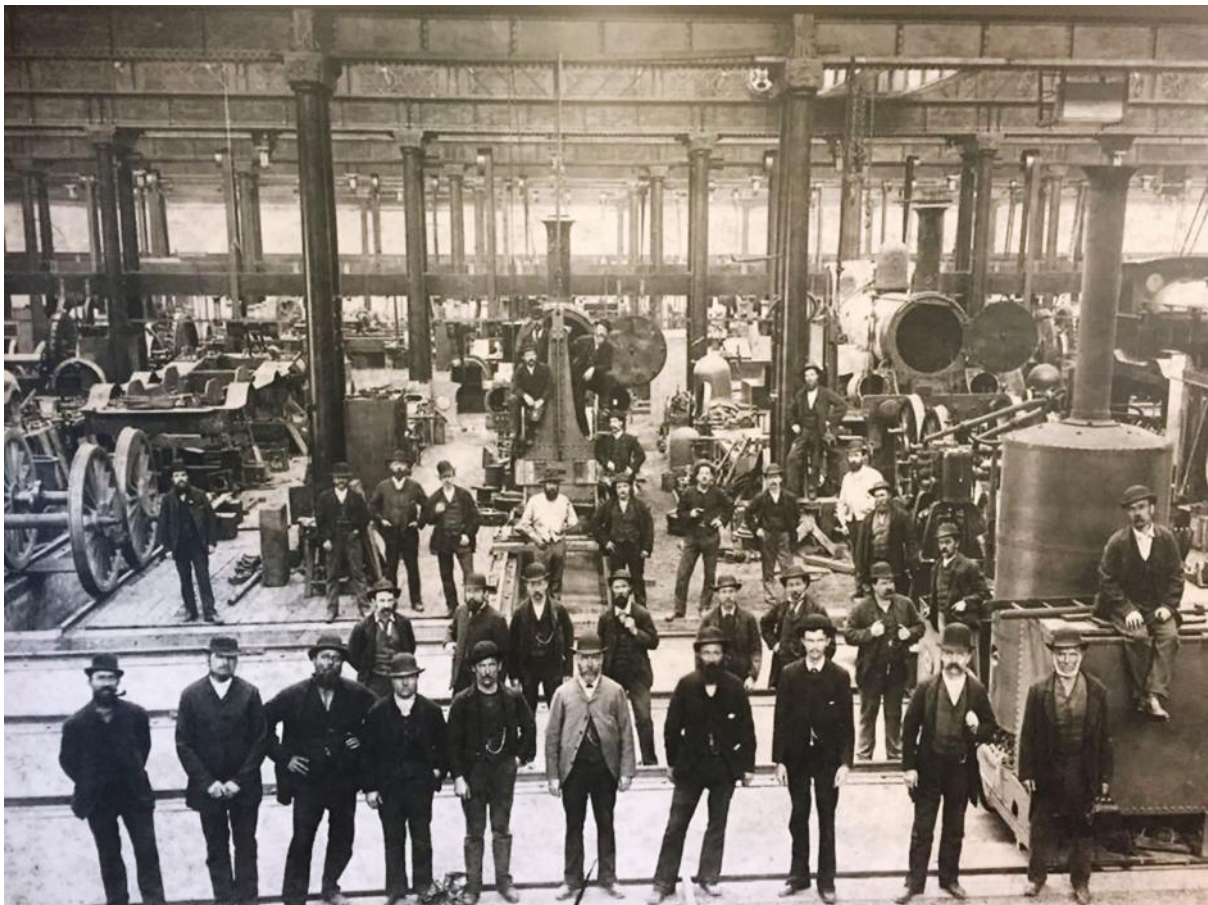
lived to the age of 81. His wife Jane was beside him throughout this long and eventful life, only passing away two years before George. At the time of his death seven daughters survived him, two children, including his only son, passing away as infants and Margaret, who was the only child born in England, passing when she was eight.

George was more than just a contractor or businessman—he was a benefactor, a community leader, and a man who understood that true success is measured not only in the works we leave behind but in the lives we touch.

Upon his passing in 1913, George was remembered by many as a man of great personal character. As Elliott J. Carter, who regarded George as a father figure, poignantly wrote:

“I look back on those days with moistened eyes now to think that no more shall one press in his Sydney office the worthy hand and accept the unstinted hospitality of my foster father, to me a friend from boyhood's years. There are scores of men successful in life who owe their entire position to this great personality. He has rescued men from the gutter again and again, nor did he for one moment question creed or nationality in so doing.”

ELLIOTT J. CARTER.
Springdale, 7/12/13



Eveleigh Railway Sheds NSW, George Fishburn front and centre in light coloured jacket

Note: The references supporting this article are set out in the WikiTree profile for George Fishburn at <https://www.wikitree.com/wiki/Fishburn-331>.

With thanks to Malcolm Goddard for his assistance in reviewing the drafts of this article.

Centenary of Redlands RSL



Audrey Warner

This year, the Redlands RSL is celebrating its centenary so, as an interested RSL member, I headed to Trove to see if I could find any articles from 1925 that might relate to that event. Of course, as usual, Trove was able to enlighten me with the following article printed on page 13 of the *Brisbane Courier* dated Wednesday 13th May, 1925.

R.S.S.I.L.A. REDLANDS SUB-BRANCH. CLEVELAND, May 12

There was a large gathering of returned soldiers with their relatives and friends at the Masonic Hall, on Monday evening. Acting in conjunction with State officials of the League, the local 'diggers' had arranged a concert and lantern lecture, to which the general public were invited, to celebrate the formation of the Redlands sub-branch of the R.S.S.I.L.A. The party from Brisbane included Messrs. Fraser East (president) and Geo. Simpson (secretary), State branch R.S.S.I.L.A., Christie (president) and Paton (secretary), Brisbane district branch, R. Best (secretary), Brisbane sub-branch, R. Witherwick, Viv. Brahms, Barclay, and Colonel Pye. The lantern lecture was given by Colonel Pye, who brought a fine collection of slides of soldiers' memorials in various parts of the world. At the conclusion of the lecture, scenes of the opening of the Anzac Club were thrown, on the screen. Mr. Geo. Simpson (State secretary) briefly explained the activities of the League, and the manner in which funds were raised to enable them to erect the club. Messrs. Fraser East and Christie also gave brief addresses. The musical part of the programme was contributed to by Misses G. B, James (elocutionist), C. Philp (soprano), Messrs. R. Best (baritone), Barclay (pianist), Geo. Simpson (cornetist), and Viv. Brahms. After the concert a meeting of the returned soldiers was held to elect the officials of the Redlands sub-branch for the ensuing 12 months. It was decided that the next meeting of the sub-branch should be held on 18th inst. The election of officers resulted as follows:- President, Mr. Campbell; vice-presidents. Messrs. J. Cuthbert, Were, and S. J. Moylan; hon, secretary. Mr. G. Wort, and hon. treasurer, Mr. Stockton. The membership totals 33.



Cleveland Masonic Hall built in 1921 at 61 Shore Street (Redland City Bulletin)

Do you have a treasure from TROVE to share? Write them up and send them to the Newsletter Editor at redlandgseditor@gmail.com or take them to the Writers Interest Group and turn them into something special to remember.

Note: The National Library of Australia focuses on digitising newspapers published before 1955 on the general understanding that they are out of copyright. Newspapers published after 1954 remain in copyright and require permission from the publishers to digitise and deliver online. Some newspaper titles published after 1955 have been made available due to individual agreements with the publisher. Please check them.

Forthcoming Events

CONNECTIONS - Australasian Conference 2025 – LAST CHANCE!!



This is a premier event for local and family historians, ancestry researchers and genealogists to uncover the past, celebrate the present and tap into the future.

Date: **21 to 24 March 2025**

Venue: Brisbane Technology Park, 1 Clunies Ross Court, Eight Mile Plains QLD

Full details will be found on GSQ's website: <https://www.connections2025.org.au/>

Wandering Through the Web



Queensland State Archives - Navigating handwritten documents with ease

<https://www.qld.gov.au/recreation/arts/heritage/archives/about-us/news-and-events/navigating-handwritten-documents-with-ease>

We're excited to introduce a valuable new suite of resources designed to help you learn about the art of deciphering cursive handwriting within archival records and other materials.

The transcription of records and documents containing cursive handwriting is a skill that many find challenging. We've put together a video, fact sheet and blog post which all offer practical tips and strategies for deciphering handwritten documents.

Covering essential techniques, hints, and examples, it will equip you with the skills needed for transcription and general research purposes.

BlueSky the Twitter alternative



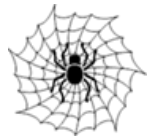
BlueSky is a new player in the social media universe. It has been around for a little while, but it has shot to prominence amidst the growing dissatisfaction with the established social media companies. Your editor signed up to BlueSky to see what all the fuss was about. So BlueSky in the first place is an alternative to Twitter and at face value looks a lot like Twitter with its short text and video messages, feeds, likes and reposts etc. It actually started as a research project at Twitter but went independent when Twitter was taken over by Elon Musk. From February 2024 until February 2025, it has grown from nothing to 30 million users, such is the disaffection with Twitter.

My initial experience in early January 2025 was mixed with some unpleasant things popping up in my feed. There appears to have been a coordinated attack on BlueSky to tarnish its reputation for successfully competing against the established players. This problem was quickly responded to by the developers and I am only seeing what I want to see. It is an open-source platform owned by a not-for-profit organization.

There is a growing presence, for example of #genealogy and #familyhistory feeds and members; posting all sorts of updates and services as well as the normal chit chat on topics like, is it safe to do a DNA test etc. Some organisations posting include:

- International Society of Genetic Genealogy@isogg.bsky.social, 1.3K followers, 287 following, 34 posts
- MyHeritage@myheritageofficial.bsky.social, 855 followers, 82 following, 29 posts
- Who Do You Think You Are? Magazine@wdtyamagazine.bsky.social, 443 followers, 469 following, 26 posts
- Many British family history societies, Cheshire, Glamorgan, York, North West Kent, Devon, West Middlesex, Suffolk, Doncaster etc.

If you are a social media 'doom scroller' and you have not had a look at BlueSky, there is definitely enough there now to make it interesting for genealogists.



Rare Resource on Pioneer Women in Victoria

The Australia Project in WikiTree identified a rare resource on the pioneer women of Victoria. Only six copies of the book were printed in 1937, with 3 copies in the physical collections of Australian Libraries, one at the Royal Historical Society of Victoria and one in the British Library. It was thought the 6th copy was in private hands. The reference for the book is:

Records of the pioneer women of Victoria, 1835-1860 / compiled by The Historical Committee of The Women's Centenary Council. Melbourne : Osboldstone, 1937. <https://catalogue.nla.gov.au/catalog/968803>

The Project commenced an exercise to try and preserve this resource and make it available as an Australia Project resource. They now advise that the book has just been digitised by the State Library of Victoria.

https://find.slv.vic.gov.au/discovery/fulldisplay?vid=61SLV_INST:SLV&search_scope=slv_local&tab=searchProfile&context=L&docid=alma991708363607636

National Archives of Australia

16 Corporate Drive, Cannon Hill

Phone: (07) 3249 4200

Website: www.naa.gov.au

Important! Before visiting, you should check NAA's requirements at <https://www.naa.gov.au/help-your-research/research-centres#before-you-visit>. Bookings are not essential but may be required if busy. Phone 07 3249 4200 to plan your visit and to find out more about COVID-19 health and safety measures in place.

Open - Wednesday to Friday 9:00am to 4.30pm
Closed – Saturday to Tuesday and Public Holidays

Free on-site parking is available.

The strengths of their Brisbane facility collection are -

- immigration records that date from the 1850s
- post office and mail service records and photographs
- works plans which cover everything from iconic buildings such as the General Post Office and Customs House, to defence service homes built in typical Queenslander fashion.

For details of regular Events, you can register on their website to arrange a subscription to their free newsletter.

Queensland State Archives

435 Compton Road, Runcorn

Phone: (07) 3037 6777

Website: www.archives.qld.gov.au

When visiting the Reading Room, it is advisable to pre-order items on the "ArchivesSearch" catalogue to ensure that they are available on your arrival - <https://www.archivesearch.qld.gov.au/>

Open hours are Monday to Friday 9.00am to 4.30pm & second Saturday of each month 9.00am to 4.30pm. The Reading Room is not open on public holidays or during the Christmas to New Year holiday period.

QSA's archival collection comprises of millions of public records dating back to the early Moreton Bay penal settlement of 1823. Free on-site parking is available.

The QSA holds informative Seminars and Events throughout the year, some on their premises, some at external venues. Check "*What's on*" in their website for details. You can keep informed of these **by arranging a free subscription** to "*qsa bulletin*", using the link on their website. The bulletin is sent by email.

Where to get your BDM Certificates

Prices are based on Historical Certificates, where available

This information is a guide. Please check websites for full details of types of certificates available, how to place orders and how to make payments.

Prices are changed regularly by government agencies.

Queensland

Registry of Births, Deaths & Marriages (Qld)
Level 32/180 Ann St, Brisbane City QLD 4000
PO Box 15188, City East, Qld 4002
Phone: 13 74 68
Hours: Monday-Friday 8.30am – 4.30pm
\$24.70 Historical Image – Download
\$24.70 Historical Source Image – Download
\$34.70 Historical Certificate – Postage included.
<https://www.qld.gov.au/law/rbdlm>

New South Wales

NSW Registry of Births, Deaths & Marriages
GPO Box 30, Sydney, NSW 2001
Phone: 13 77 88
\$39.00 with Registration Number
\$53.00 w/out number (includes 10-year search)
Postage included
Credit card charges extra
www.bdm.nsw.gov.au

Transcription services:

www.joymurrin.com.au

<http://www.transcriptions.com.au/>

Victoria

Registry of Births, Deaths & Marriages
GPO Box 4332, Melbourne, Vic 3001
Phone: 1300 369 367
\$22.50 Uncertified Historical Image - Download
\$55.80 Historical Certificate – Postage extra
www.bdm.vic.gov.au

Australian Capital Territory

(Pre 1930, apply to NSW)
Registry of Births, Deaths & Marriages
GPO Box 158, Canberra City, ACT 2601
Phone: (02) 6207 3000
\$72.00 – Postage included
Historic Death and Marriage Indexes are available.
<https://services.accesscanberra.act.gov.au/s/public-registers>

South Australia

Births, Deaths & Marriages
Consumer & Business Services
GPO Box 1351, Adelaide, SA 5001
Phone: 131 882
\$31.25 Historical Image - Emailed
<https://www.sa.gov.au/topics/family-and-community/births-deaths-and-marriages/family-research>



Also use their link to [Genealogy SA](#) for an online name search for BDMs also to search a number of other worthwhile resources!

Western Australia

Registry of Births, Deaths & Marriages
PO Box 7720, Cloisters Square, Perth, WA 6850
Phone: 1300 305 021
\$20.00 Uncertified Copy – Postage included
<https://www.wa.gov.au/service/justice/civil-law/searching-family-history>

Tasmania

Registry of Births, Deaths & Marriages
GPO Box 198, Hobart, Tasmania 7001
Phone: 1300 135 513
\$64.72 – Postage included
<https://www.justice.tas.gov.au/bdm/indexes>

Northern Territory

Registry of Births, Deaths & Marriages
GPO Box 3021, Darwin, NT 0801
Phone: (08) 8999 6119
\$54.00 – Postage extra
(1856-1863 check NSW)
(1863-1870 check SA)
<https://nt.gov.au/law/bdm>

New Zealand

Registry of Births, Deaths, Marriages & Citizenship
PO Box 10-526, Wellington 6143 New Zealand
\$(NZ)25.00 Printout - Emailed
Printout has more information than a certificate (Visa, MasterCard & American Express accepted)
www.bdmhistoricalrecords.dia.govt.nz/Home/

